



Touchpad Replacement Guide

Written By: Jehan Suleman





TOOLS:

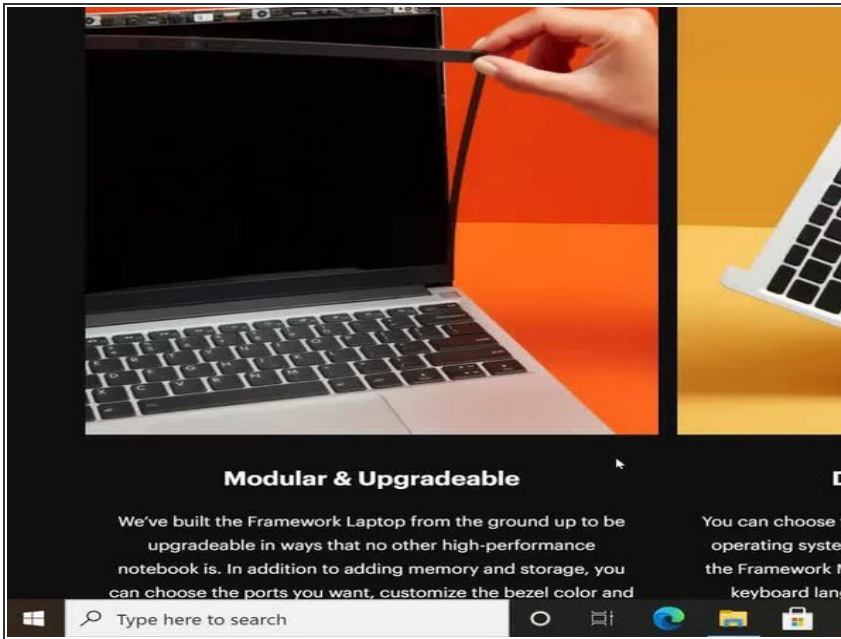
- [Framework Screwdriver](#) (1)



PARTS:

- [Touchpad Kit](#) (1)

Step 1 — Shut down the Framework Laptop



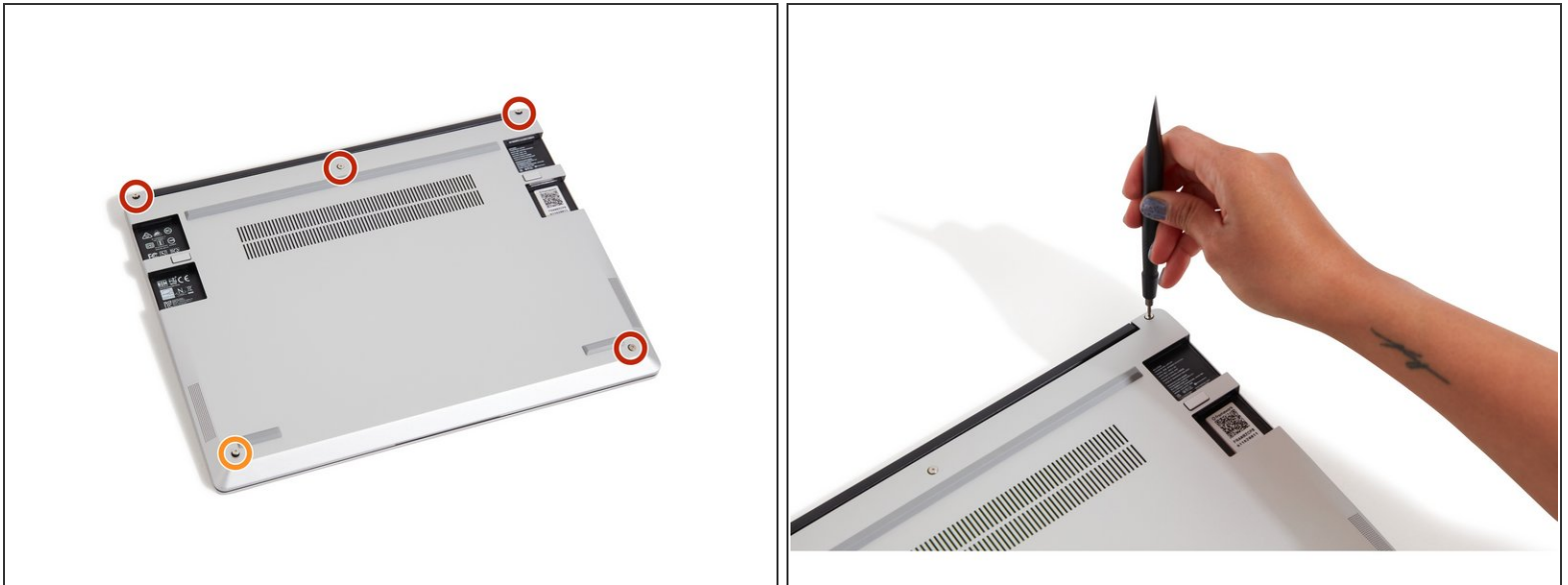
- Power off the Framework Laptop by navigating to the Windows icon on the bottom left and clicking on "Power" followed by "Shut down," or if on Linux, the equivalent action there.

Step 2 — Unplug power



- Unplug your power cable from the USB-C Expansion Card in your Framework Laptop.

Step 3 — Unscrew the five fasteners on the Bottom Cover



- Close the lid on your Framework Laptop and place it upside down on a soft, non-marring surface, such as the bag that it shipped in.
 - Using the T5 bit in the Framework Screwdriver, unscrew the 5 fasteners on the Bottom Cover. These fasteners will remain attached in the Bottom Cover so that you do not lose them.
 - The fastener on the bottom left (circled in orange) will not unscrew as far as the others, as it is acting as a lifter for the Input Cover.
- ⓘ You'll hear this fastener start clicking as you rotate when it is unscrewed far enough.

Step 4 — Lift up and flip over the Input Cover



- Flip the Framework Laptop back over and open the lid to around 120 degrees.

⚠ Important: Pull the Input Cover off carefully as it is still attached to the Mainboard via the Touchpad Cable. You don't need to disconnect this cable to do most repairs. You can just flip the Input Cover over. If you do want to disconnect it though, make sure to disconnect the Mainboard side using the finger loop over the orange label.

- The bottom right corner of the Input Cover lifts up when the five fasteners are properly unscrewed from the previous step. You should not have to use any excessive force to remove the Input Cover.
- Carefully lift the cover up from the bottom right corner. If you need to, you can use the spudger end of the Framework Screwdriver to lift it as well. Lift the Input Cover off the Mainboard, flip it over (keyboard side down), and place it about halfway on the Bottom Cover.

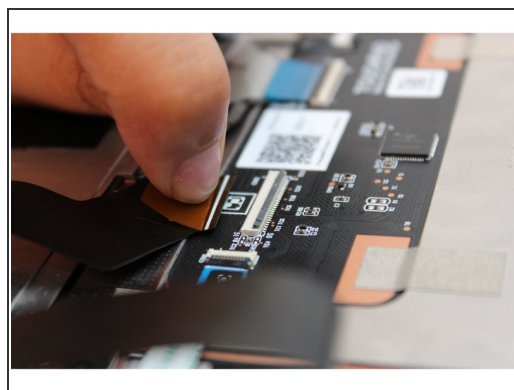
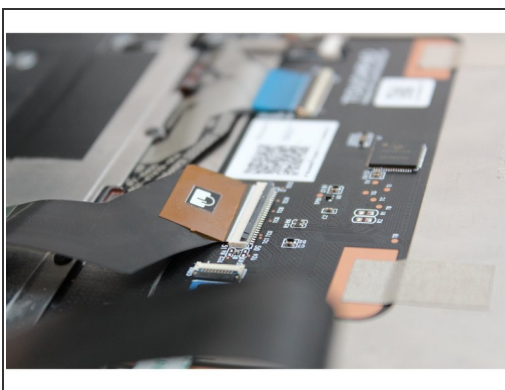
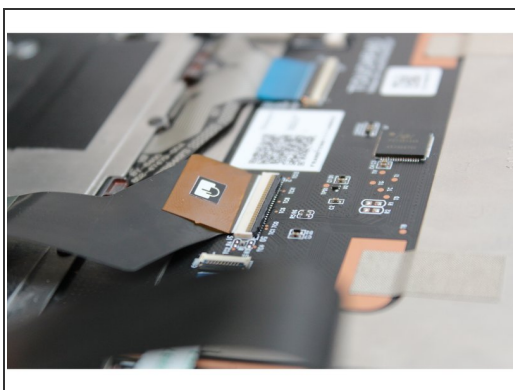
⚠ Be sure not to put too much force on the Touchpad Cable when doing this.

⚠ If the LEDs on the left and right sides of the system are flashing red when you lift off the cover, it means the system is still powered on. Make sure your power cable isn't plugged in and that you have shut down correctly.

i Note that it may take up to 30 seconds after shutting down for the system to fully power off. Wait until the LEDs stop flashing before proceeding.

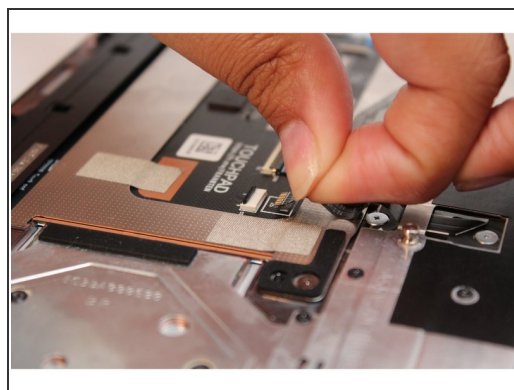
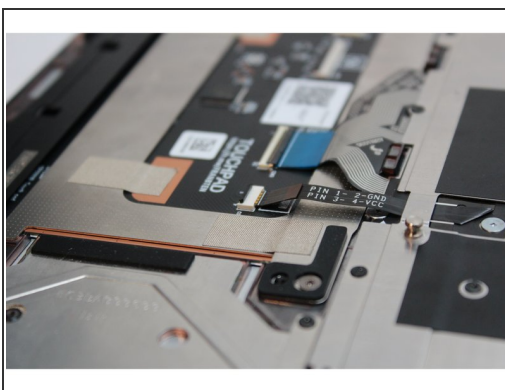
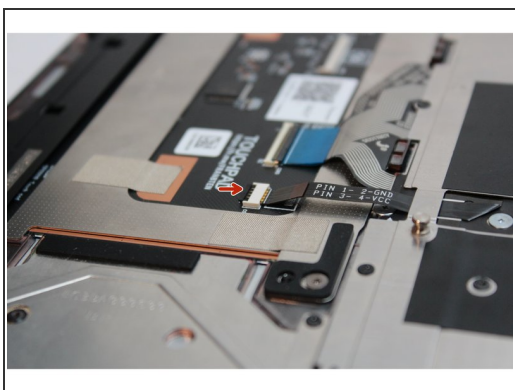
⚠ You should keep the Battery connector plugged in unless you need to replace the Battery, Mainboard, or Speakers. This connector is easy to accidentally damage, so it's better to not handle it.

Step 5 — Disconnect the Touchpad Cable



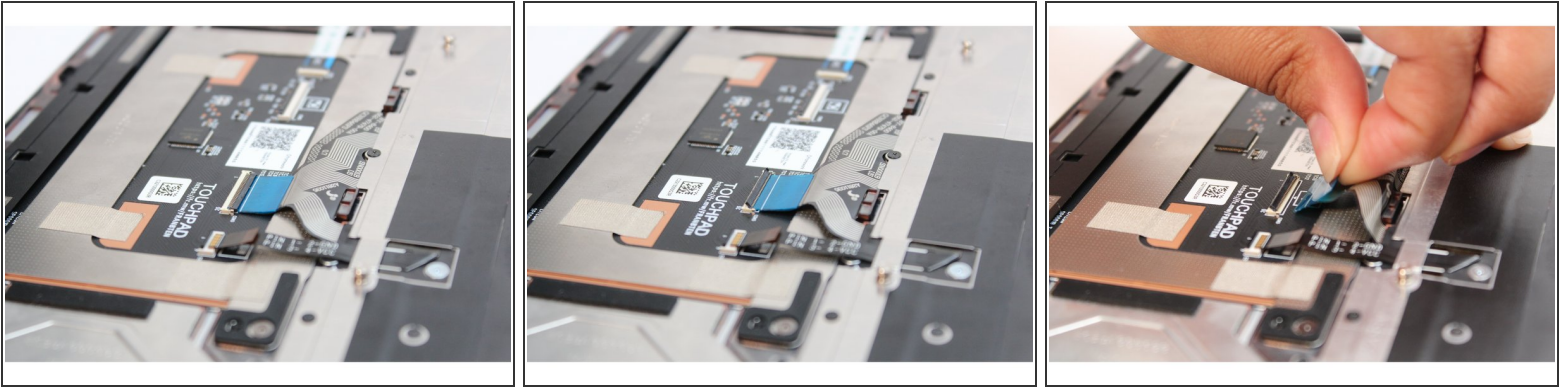
- Using the spudger end of the Framework Screwdriver or your fingernail, disconnect the Touchpad Cable by flipping up the black latch up on the connector located on the Touchpad Module. This will fully disconnect the Input Cover from the Mainboard.
- Grip the brown tab and slide the cable straight out.
- The Input Cover is now completely disconnected from the Bottom Cover. You can safely move it away and begin working on removing the rest of the cables.

Step 6 — Disconnect the Keyboard Backlight



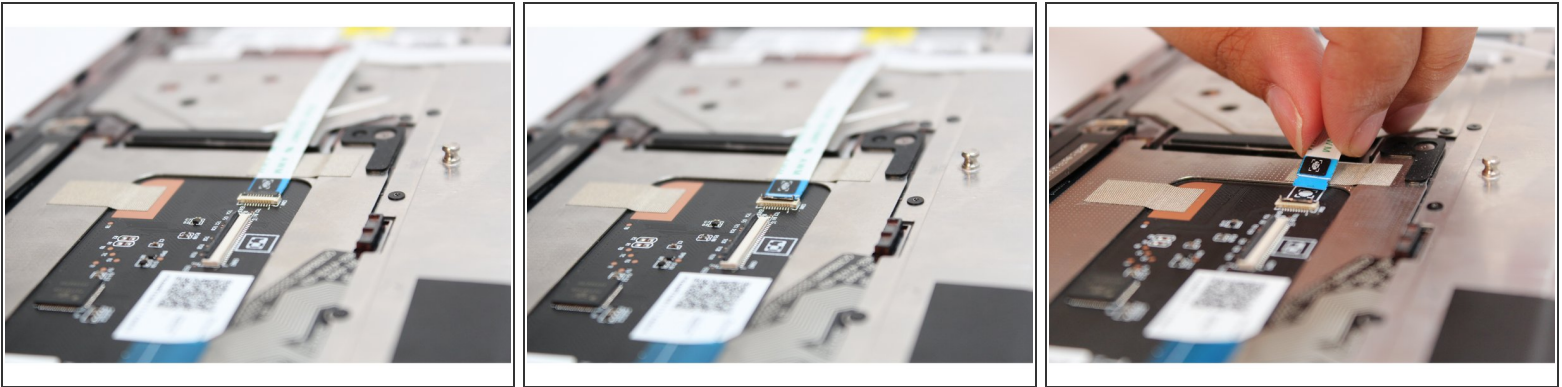
- Using the spudger end of the Framework Screwdriver or your fingernail, disconnect the Keyboard backlight cable by flipping up the black latch up on the connector located on the Touchpad Module.
- Grip the black pull tab on the cable and pull it straight out.

Step 7 — Disconnect the Keyboard Membrane



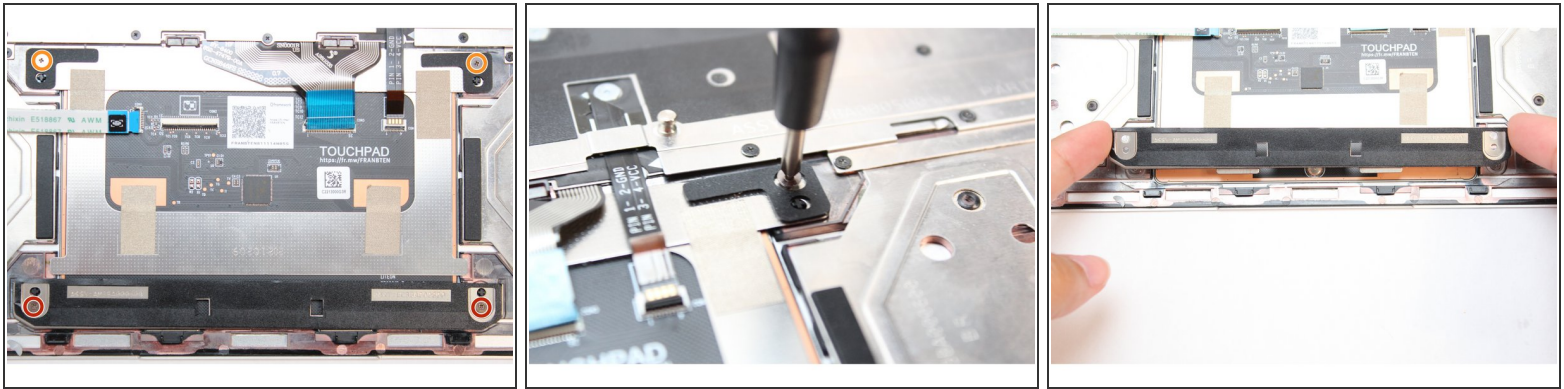
- Using the spudger end of the Framework Screwdriver or your fingernail, disconnect the Keyboard Membrane from the Touchpad Module by flipping the black latch up.
- Grip the blue pull tab on the cable and pull it straight out.

Step 8 — Disconnect the Fingerprint Cable



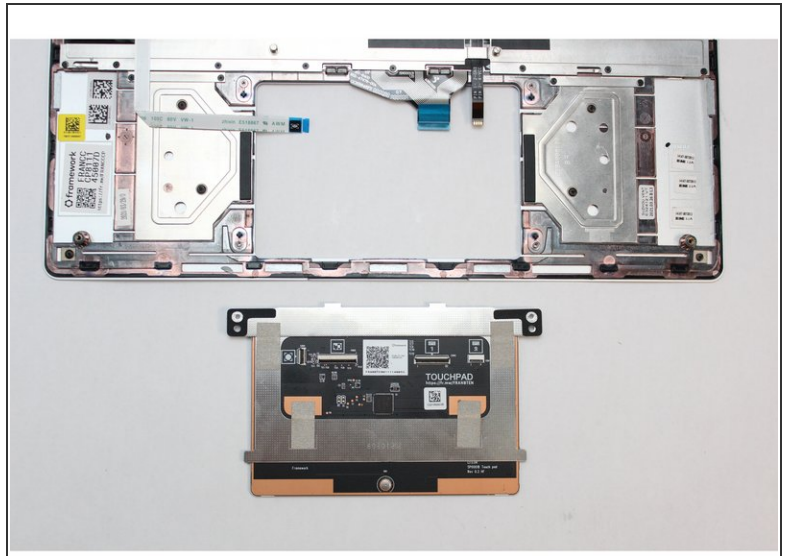
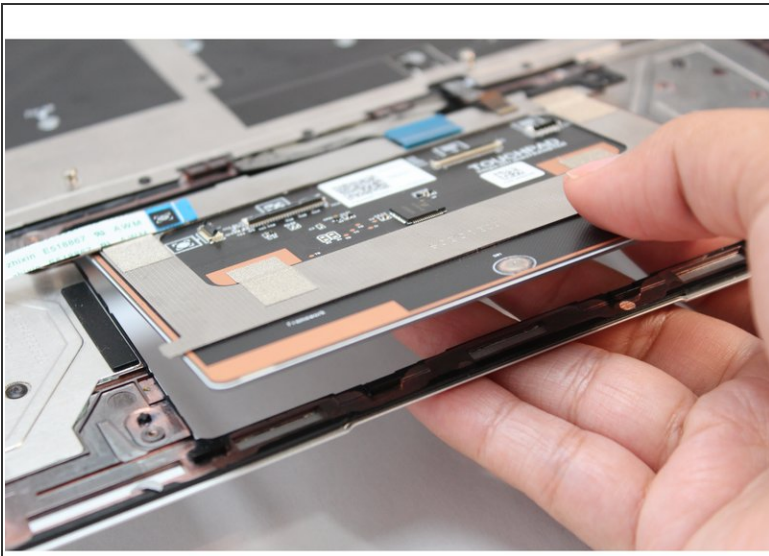
- Next, disconnect the Fingerprint Cable from the Touchpad Module. Lift the black latch up using your fingernail or spudger end of the Framework Screwdriver.
- Grip the cable and pull it straight out.

Step 9 — Unscrew the fasteners in the Touchpad Module



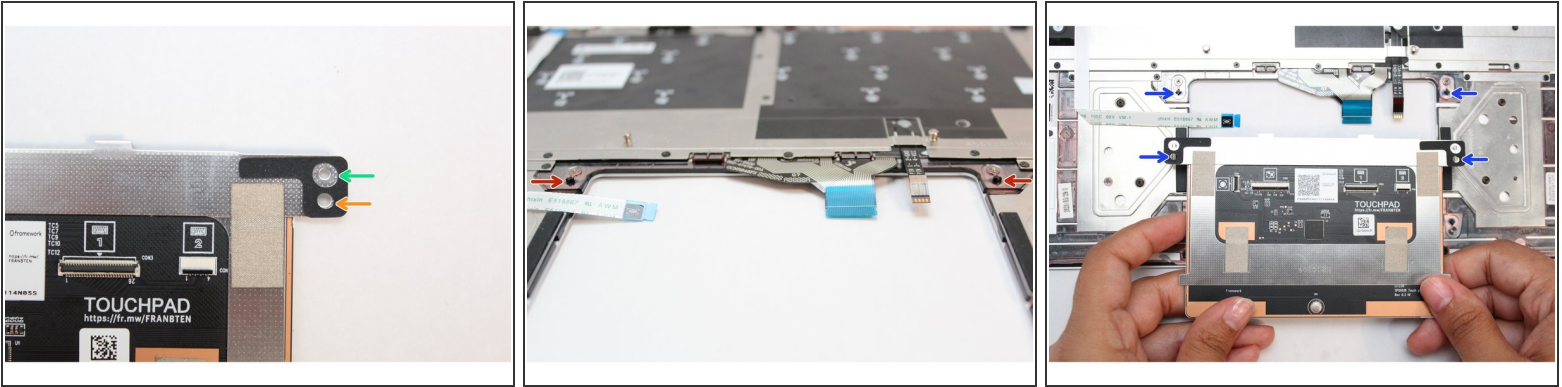
- Using the PH0 bit in the Framework Screwdriver, unscrew the two fasteners holding the Touchpad Module Bracket in place as indicated in red in the first image, and remove the Bracket.
 - Then unscrew the two fasteners holding the Touchpad Module, indicated in orange.
- ✦ Your Framework Screwdriver has a double-sided bit! One end is the T5 bit, the other end is the PH0 bit. To switch from the T5 bit to the PH0 bit pull the bit out using your fingers, flip it around, and place it back into the screwdriver!

Step 10 — Remove the Touchpad Module



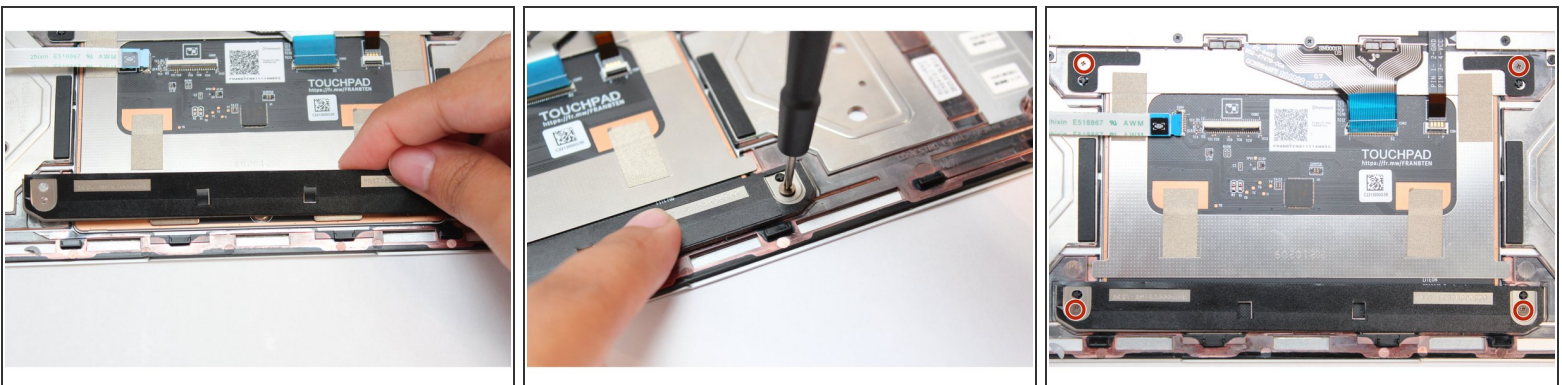
- The Touchpad Module is now fully detached from the Input Cover.
- You can now remove the module by lifting up the Input Cover and gently pushing the module up so that it is easier to grab in image one.

Step 11 — Install the new Touchpad Module



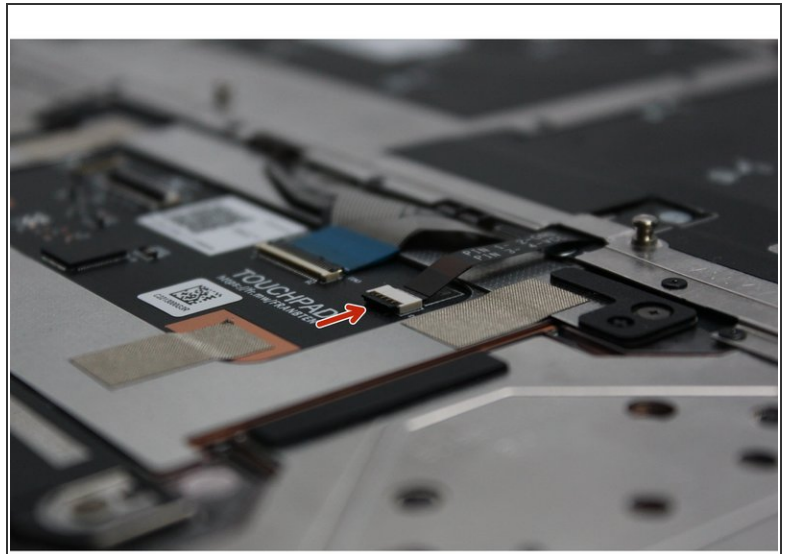
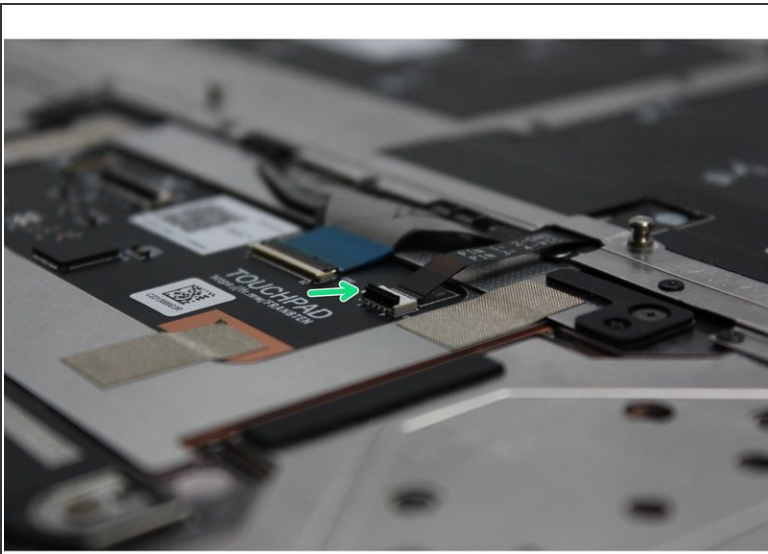
- The Touchpad Module has a black bracket on the top left and right corners.
- The larger hole is for the fastener.
- The smaller hole is for the alignment pin which allows you to properly seat the module on the Bottom Cover.
- Find the alignment pegs on the Bottom Cover.
- Gently place the Touchpad module on the Bottom Cover so that the alignment pegs and holes fit into one another.

Step 12 — Screw the fasteners into the module



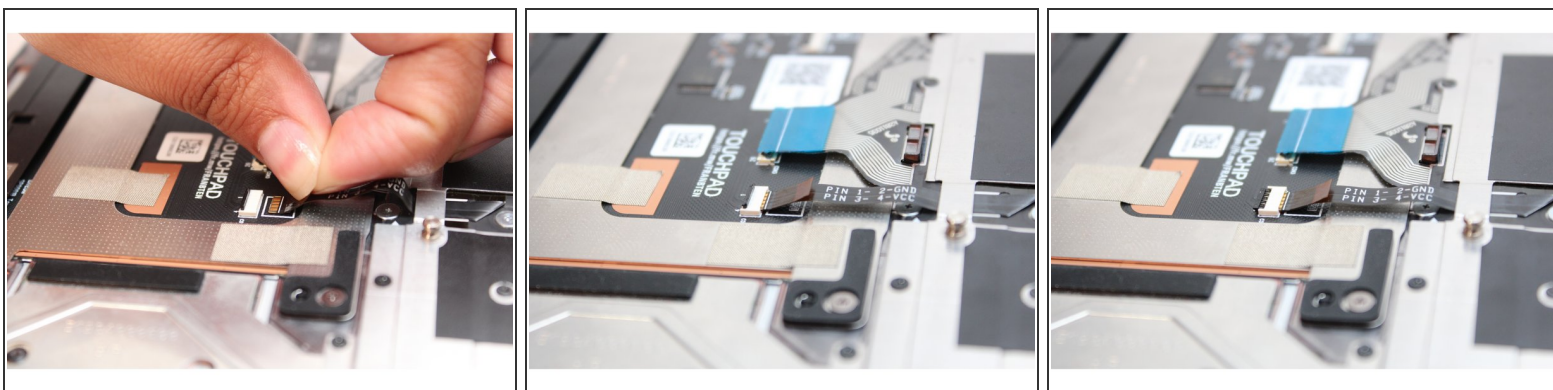
- Fit the long black bracket on the bottom of the Touchpad Module as indicated in the image.
- Using the PH0 bit in the Framework Screwdriver, fasten the four fasteners back into place.

Step 13 — Prepare to connect the cables into the module



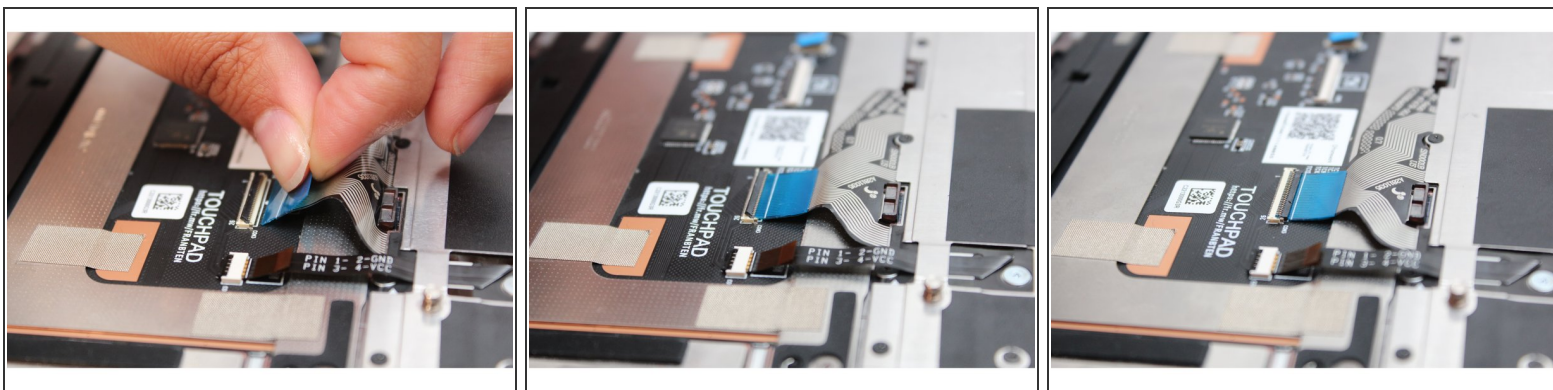
- When inserting cables into their respective connectors, always make sure the black latch is flipped up so that you can slide the cable into or out of the connector.
- Image one shows a black latch that is flipped up allowing cables to be inserted or removed.
- Image two shows a black latch that is flipped down which secures a cable into place. If the connector latch is secure, you will not be able to insert a cable into it.

Step 14 — Connect the Backlight Cable



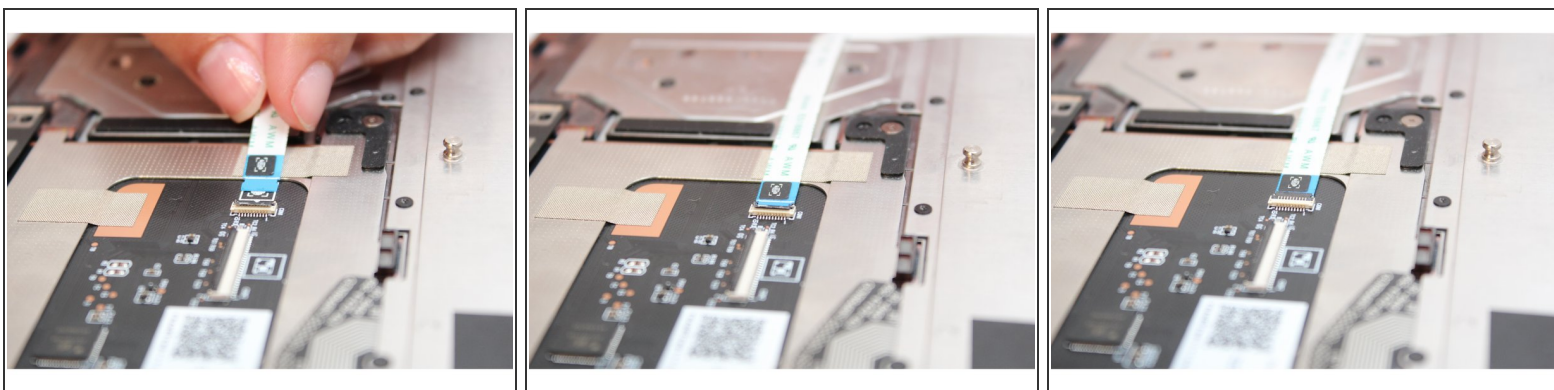
- Use the black pull tab and connect the Keyboard Backlight Cable into the Touchpad. Make sure the black latch is flipped up so that you can slide the cable into the connector.
- Make sure to slide the cable in until the white line is almost at the edge of the connector.
- Flip the black latch down to secure the cable

Step 15 — Connect the Keyboard Membrane Cable



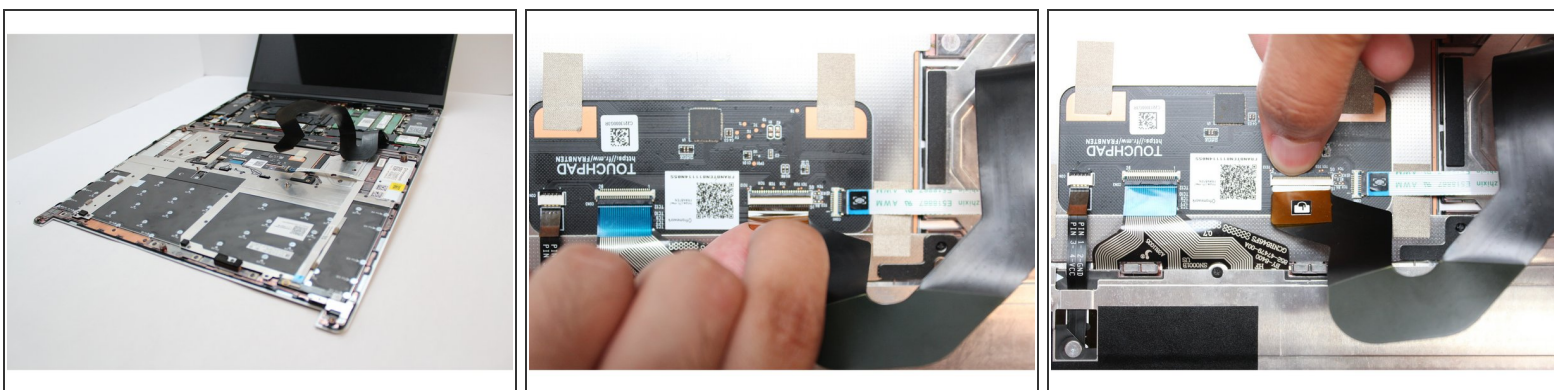
- Grip the blue pull tab and connect the Keyboard Membrane cable into the Touchpad. Make sure the black latch is flipped up so that you can slide the cable into the connector.
- Slide the cable in until the white line is almost at the edge of the connector.
- Flip the black latch down to secure the cable.

Step 16 — Connect the Fingerprint Cable



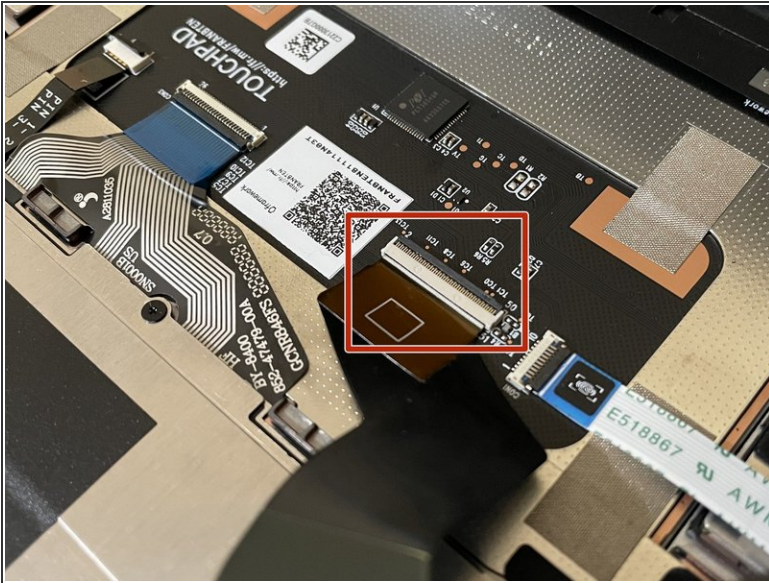
- Grip the Fingerprint Cable and connect it into the Touchpad Module. Make sure the black latch is flipped up so that you can slide the cable into the connector.
- Slide the cable in until the white line is almost at the edge of the connector.
- Flip the black latch down to secure the cable.
- The Touchpad Module is now connected to the Input Cover.

Step 17 — Connect the Touchpad Cable



- Place the Input Cover on the Bottom Cover Keyboard Side down as indicated in the first Image.
- Using the pull tab, connect the Touchpad Cable to the cover by sliding it straight into the connector until the white line is almost at the edge of the connector.
- Flip the black latch down to secure the cable.

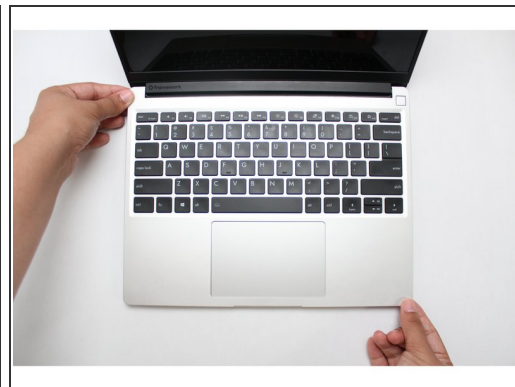
Step 18 — Make sure the Touchpad side of the Touchpad Cable is fully inserted



⚠ Before closing up the laptop, make sure that the Touchpad end of the Touchpad Cable is fully seated in the receptacle.

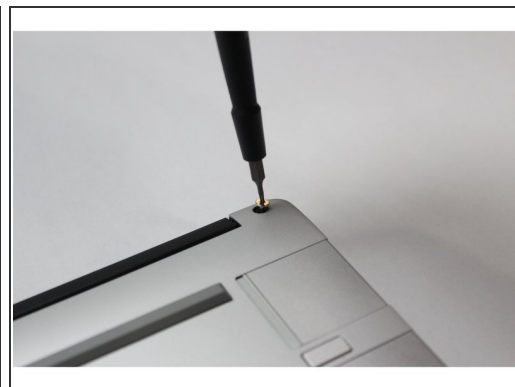
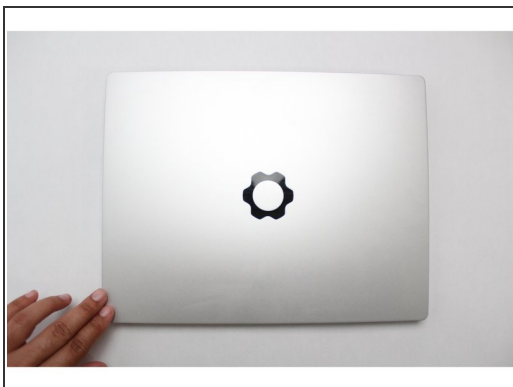
- The cable should be inserted far enough that the white line almost touches the receptacle.
- If it is not inserted far enough, you'll need to flip up the black latch on the other side of the connector, slide the cable in further, and then close the black latch again.

Step 19 — Flip the Input Cover into place



- Flip the Input Cover over the Bottom Cover so that the keyboard is facing up and attach it to the Bottom Cover by aligning the top and bottom edges of both covers.
- Tip: The covers are magnetic and should fit into one another easily. If you feel any resistance simply lift the Input Cover up and try again.

Step 20 — Screw the fasteners into the Bottom Cover



- Close the Framework Laptop and turn it upside down to reveal the five fasteners on the Bottom Cover.
- Using the T5 bit in the Framework Screwdriver, screw all 5 fasteners back into the Bottom Cover.

⚠ Be sure to not over-tighten the fasteners.

- If you have any questions or concerns feel free to reach out to Framework Support at support@frame.work

- To purchase a Framework Laptop visit the [Framework website](#)
- Want to learn more about the Framework Laptop? Take a look at our [blog](#)
- If you have any questions or concerns, feel free to reach out to [Framework Support](#)