



Bezel Replacement Guide

Written By: Sandy Qualey-Dobson



INTRODUCTION

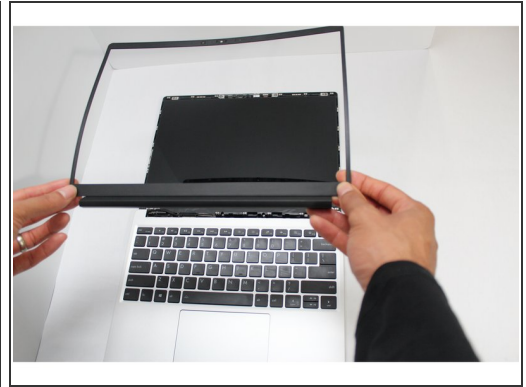
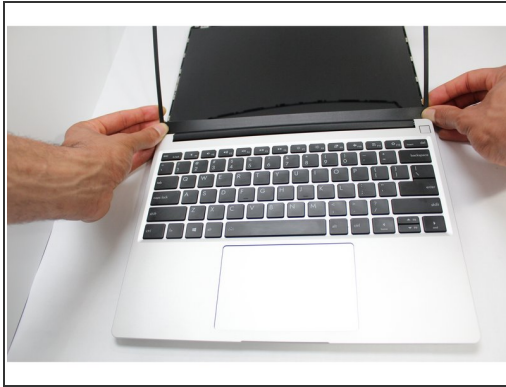
The magnetic Framework Bezel is one of the easiest components to swap. No tools needed, just align it to the Display and you are all set. We plan on having more color options as we go so that you can further customize your very own Framework Laptop.



PARTS:

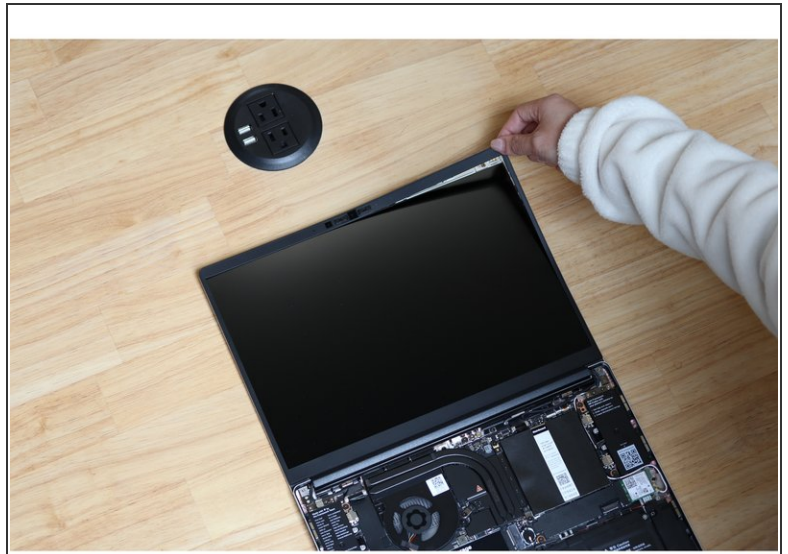
- [Bezel](#) (1)
-

Step 1 — Remove the Bezel



- Open the Framework Laptop 180 degrees to remove the Bezel.
- The Framework Bezel is attached by magnets so you will not require any tools to remove it. Just use your fingernail and pry the Bezel away from the display from one of the top corners of the Framework Laptop.
- Once the Bezel starts peeling off towards the bottom of the Display, lift it up using caution. You might feel a little resistance due to the adhesive at the bottom of the display.

Step 2 — Attach the Bezel



- Open the Framework Laptop 180 degrees to attach the Bezel.
- If installing a new Bezel, remove the liner pieces on the bottom of the Bezel to expose the adhesive.
- Align the corners of the Bezel to the display and place it down. The Bezel is attached by magnets and should easily click into place.
- Make sure that all of the corners and edges of the Bezel are fully connected to the Top Cover. If the corners are not aligned, carefully lift up the part of the bezel and guide it into place.

- To purchase a Framework Laptop visit the [Framework website](#)
- Want to learn more about the Framework Laptop? Take a look at our [blog](#)
- If you have any questions or concerns, feel free to reach out to [Framework Support](#)