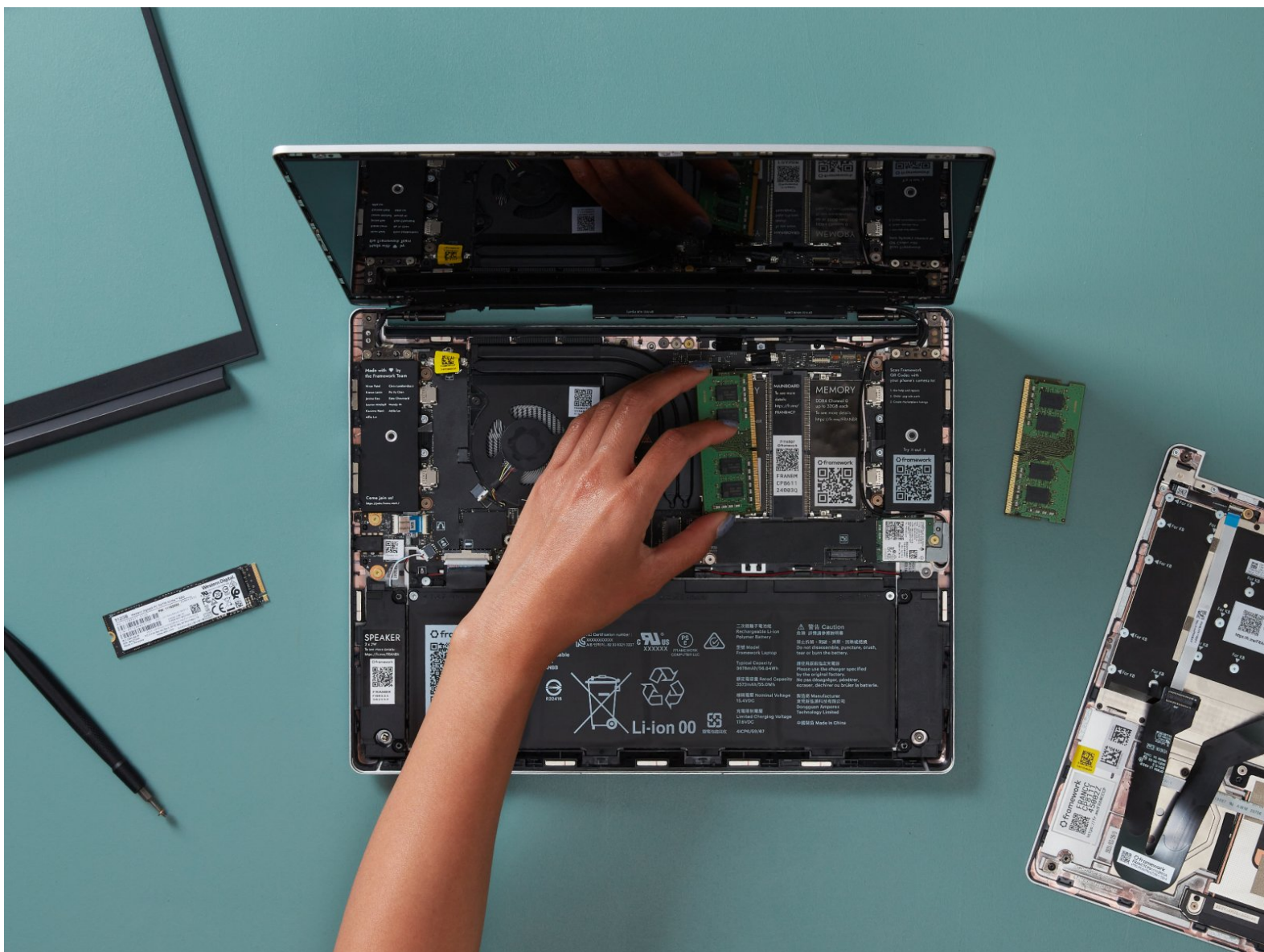




Framework Laptop DIY Edition Quick Start Guide

Written By: Jehan Suleman



INTRODUCTION

How exciting, you finally got your hands on the Framework Laptop DIY Edition! This guide will walk you through each step from unboxing to powering on your laptop so you can start using it right away. As with all our guides, make sure you read the directions in each step and view the images first.

If you have questions or run into any issues, check out the [Support](#) pages.



TOOLS:

- [Framework Screwdriver](#) (1)
-

Step 1 — Remove the Framework Laptop from the box



- Unbox your Framework Laptop. Don't power it on just yet, since you'll need to install some modules first.

Step 2 — Get your Framework Screwdriver ready for use



- Locate the Framework Screwdriver in the package underneath the Framework Laptop and keep it handy - it's the only tool you'll need to assemble the Framework Laptop DIY Edition.

Step 3 — Unpack the components



- Depending on how you customized the configuration, your package may include a combination of memory, storage, a WiFi card, and a mix of Expansion Cards. You can find all of your modules in the accessory box or bag in your shipment.
- Unpack all of these modules so that you are ready for your install!

Step 4 — Remove the Input Cover



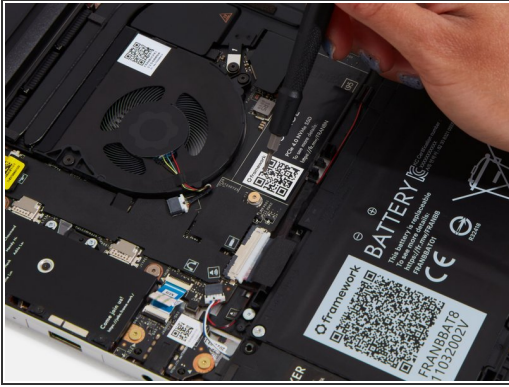
- Using the T5 bit in the Framework Screwdriver, unscrew the 5 fasteners on the Bottom Cover. These fasteners will remain attached in the Bottom Cover so that you do not lose them.
- The fastener on the bottom left (circled in orange) will not unscrew as far as the others, as it is acting as a lifter for the cover. You'll hear it start clicking as you rotate when it is unscrewed far enough.
- Turn the Framework Laptop over and open it to 120 degrees

⚠ Important: Do not pull the Input Cover fast or with too much force as it is still attached to the Mainboard via the Touchpad Cable.

- ⓘ You don't need to disconnect this cable to do most repairs. You can just flip the Input Cover over. If you do want to disconnect it though, make sure to disconnect the Mainboard side using the finger loop over the orange label, while keeping the Touchpad side connected.
- ⓘ The bottom right corner of the Input Cover lifts up when the five fasteners are properly unscrewed from the previous step. You should not have to use any excessive force to remove the Input Cover.
- Carefully lift the cover up from the bottom right corner. If you need to, you can use the spudger end of the Framework Screwdriver to lift it as well. Lift the Input Cover off the Mainboard and flip it over (keyboard side down) and place it about halfway on the Bottom Cover.

⚠ You should keep the Battery connector plugged in unless you need to replace the Battery, Mainboard, or Speakers. This connector is easy to accidentally damage, so it's better to not handle it.

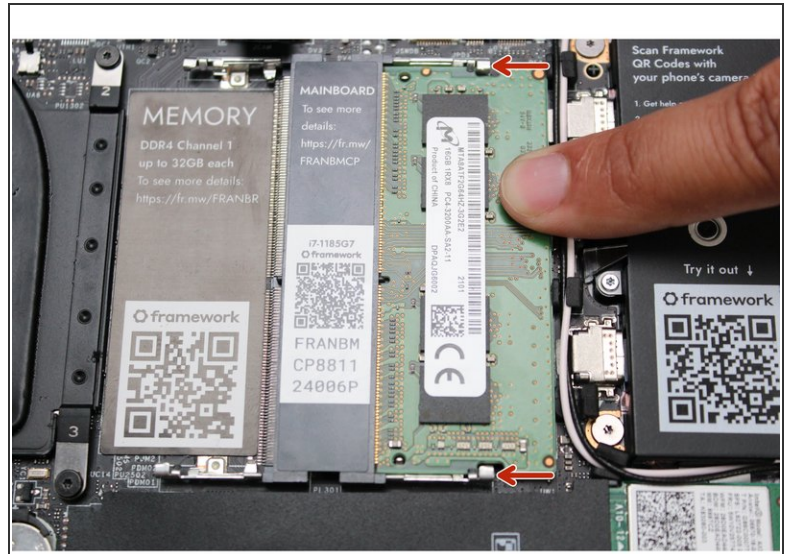
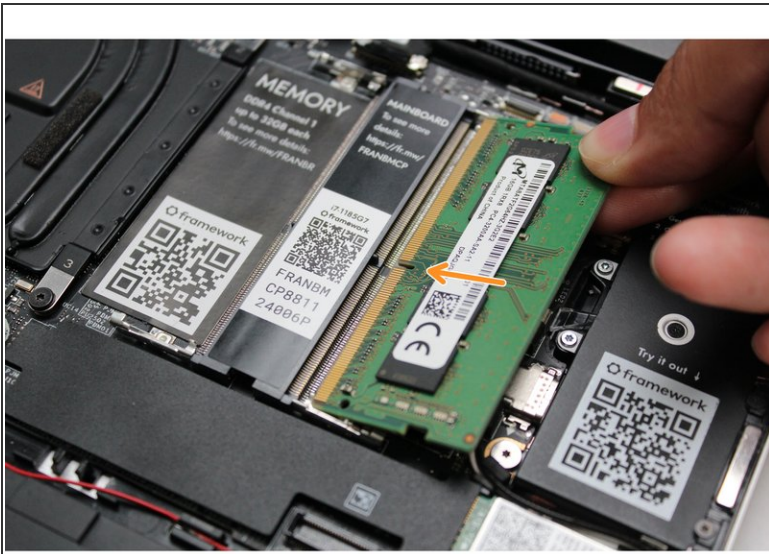
Step 5 — Install the Storage



- Install the Storage by unscrewing the fastener using the T5 bit in the Framework Screwdriver and inserting the Storage module into the slot.
- Align the notch on the Storage module with the notch on the socket and slide the module into the Mainboard.
- Once properly inserted the module will rise up at a 20-degree angle.
- Using one finger gently hold the Storage module down to the Mainboard and use your other hand to screw in the fastener using the T5 bit in the Framework Screwdriver.

⚠ Be sure to not over-tighten the fastener.

Step 6 — Install the Memory



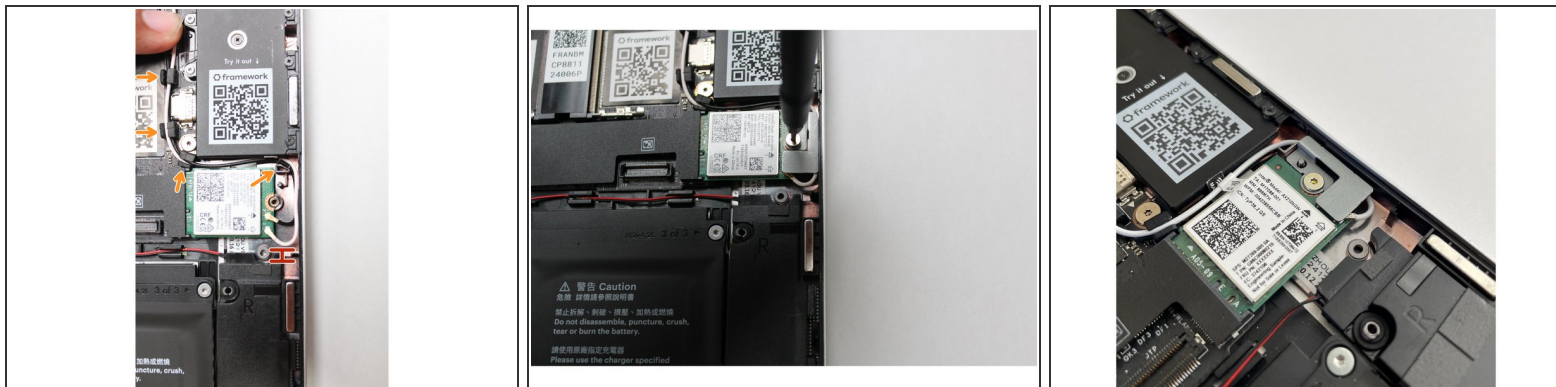
- Insert the Memory module into the Mainboard by aligning the notch on the Memory module with the notch on the socket.
- Once the module is fully inserted, it will rise up at a 20-degree angle. Gently press it down towards the Mainboard until the clips located at the top and bottom of the receptacle snap into place (see the red arrows in the second image).
- i** If you are using one Memory module, place it in the right socket that is labelled "Channel 0."
- i** The first boot after installing a new Memory module will take longer than normal, as the system prepares itself for the new module.

Step 7 — Prepare the WiFi module



- Unscrew the fastener using the T5 bit in your Framework Screwdriver, and remove and save the silver-colored WiFi Bracket that is holding down the cables.
- Remove the plastic covers from the antenna cables, and carefully connect the black and white WiFi antenna cables into their respective sockets on the module. Make sure to align them well before applying force to click them into place, as the connectors are small and fragile.
 - ❗ If you need a video overview on this, [check this out](#).
- Once both the black and white WiFi Antenna cables are connected to the module, make sure they are rotated downwards as indicated in the second picture with the blue arrows.
- While keeping a finger on top of the antennas to hold them in place, insert the WiFi module into the socket on the Mainboard.

Step 8 — Complete the WiFi module install



- Once the module is properly inserted into the Mainboard, carefully route both the black and white WiFi Antenna cables into the black rubber holders as indicated in the first image. Route both of the cables through the channel located near the top right of the WiFi module as well.

ⓘ It's ok for the metal parts of the antenna cables to touch each other and touch the WiFi Bracket. These are all part of a common ground path.

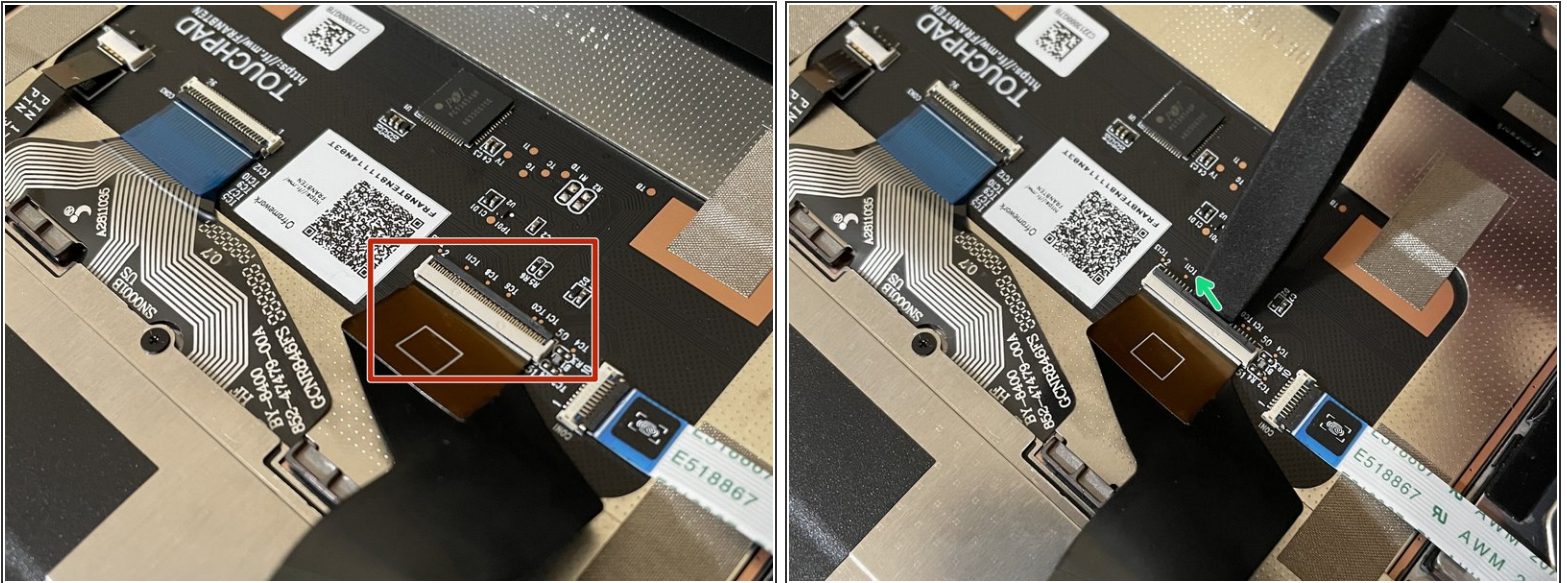
⚠ The WiFi Antenna cables should not touch the Speaker, as it impacts Speaker performance.

- Place the WiFi Bracket over the WiFi module, matching the orientation that is shown in the image, and place the fastener in the hole. Using the T5 bit in the Framework Screwdriver, screw the fastener into place.

⚠ Be sure to not over-tighten the fastener.

- ⓘ Don't forget to install the [Framework Laptop Driver Bundle](#) at the end if you're using Windows! WiFi may not work until you do that.

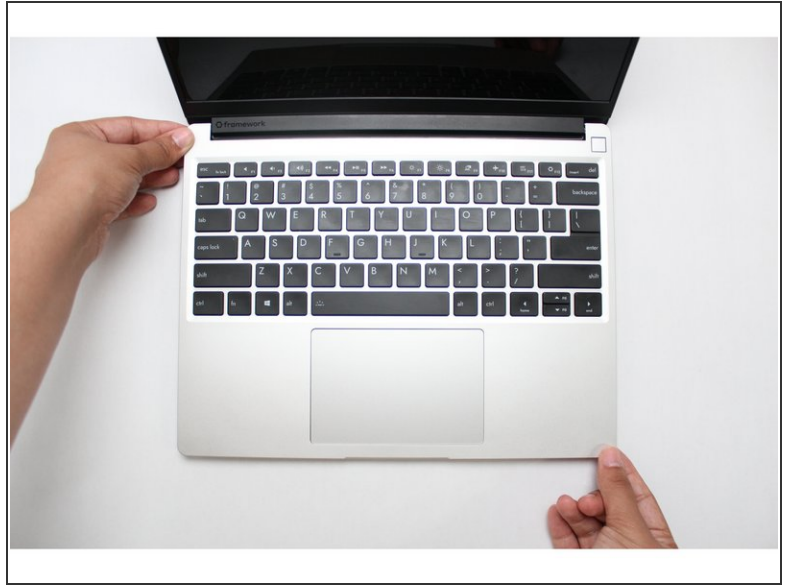
Step 9 — Make sure the Touchpad side of the Touchpad Cable is fully inserted



⚠ Before closing up the laptop, make sure that the Touchpad end of the Touchpad Cable is fully seated in the receptacle on the underside of the Touchpad.

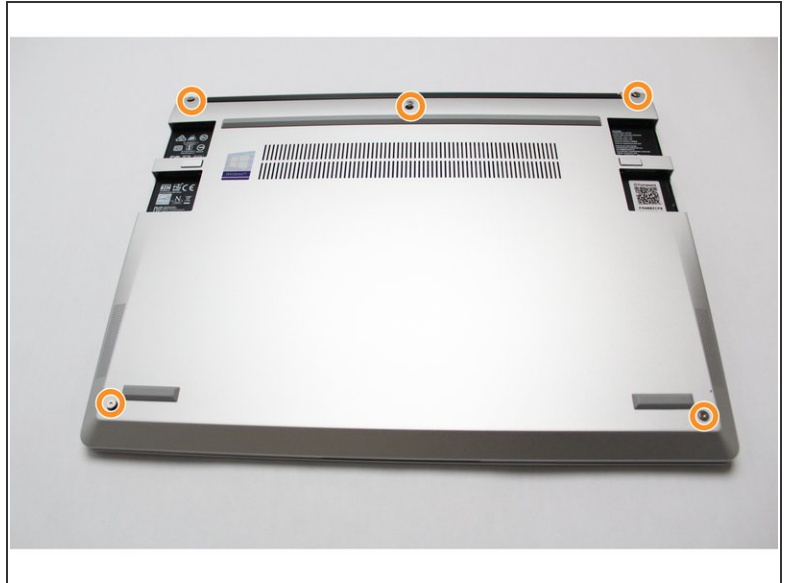
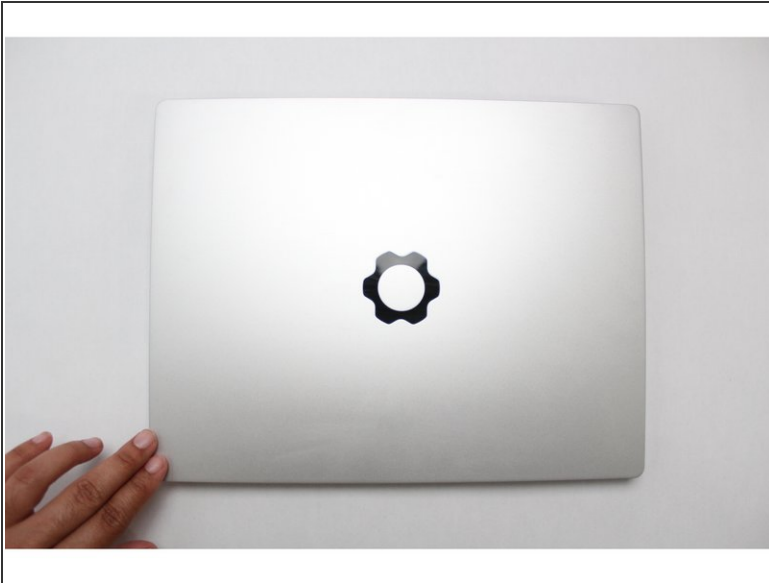
- i** If your Framework Laptop came with an envelope with instructions around adding tape to the Touchpad Cable, you can follow [the Touchpad Cable Fix Guide](#) now to add the tape to keep the cable in place.
- i** If your Touchpad Cable already has double sided tape holding it in place on the Touchpad, you're all set!
- The cable should be inserted far enough that the white line almost touches the receptacle.
 - If it is not inserted far enough, you'll need to flip up the black latch on the other side of the connector, slide the cable in further, and then close the black latch again.


Step 10 — Connect the Input Cover back on



- Flip the Input Cover over the Bottom Cover so that the keyboard is facing up and attach it to the Bottom Cover by aligning the top and bottom edges of both covers.
- ① The covers are magnetic and should fit into one another easily. If you feel any resistance simply lift the Input Cover up and try again.

Step 11 — Screw the fasteners back into place



- Close the Framework Laptop and turn it upside down to reveal the empty Expansion Card bays and fasteners on the Bottom Cover.
- Using the T5 bit in the Framework Screwdriver, screw all 5 fasteners back into the Bottom Cover.
 **Be sure to not over-tighten the fasteners**

Step 12 — Get ready to turn on the Framework Laptop!



- Insert the Expansion Cards of your choice into any of the empty bays.
- The text, logo, and QR code on the Expansion Card must be facing down (facing the laptop). Slide the Expansion card into the bay. Using two or more fingers push the card until into the bay until it clicks.
 - ⓘ You will have to use a slight amount of force to ensure proper installation of the Expansion Cards.
- Plug your Power Adapter into the USB-C Expansion Card.
- Turn the Framework Laptop over, open it, and press the power button.
 - ⓘ Note that your first boot will take a while before the logo comes up on screen as the system does memory training. The more memory you've installed, the longer this could take (on the order of a minute or two with 64GB!)

Step 13 — Install an Operating System and Drivers



- [Find the instructions for installing Windows 10 here](#)
- ⓘ Don't forget to install the [Framework Laptop Driver Bundle!](#)
- Guides for Linux (Fedora 34 and Ubuntu 21.04) are coming soon, but you can reference the [Linux sub-forum](#) in the Framework Community for now.

- To purchase a Framework Laptop visit the [Framework website](#)
- Want to learn more about the Framework Laptop? Take a look at our [blog](#)
- If you have any questions or concerns, feel free to reach out to [Framework Support](#)