



# Ubuntu 24.04 LTS Installation on the Framework Laptop 13

How to install Ubuntu 24.04 LTS Linux on a Framework Laptop 13

Written By: Matt Hartley



---

## INTRODUCTION

Once you have your Framework Laptop 13 set up following the [Quick Start Guide](#), you're ready to install your preferred OS. Ubuntu 24.04 LTS works fantastically well.

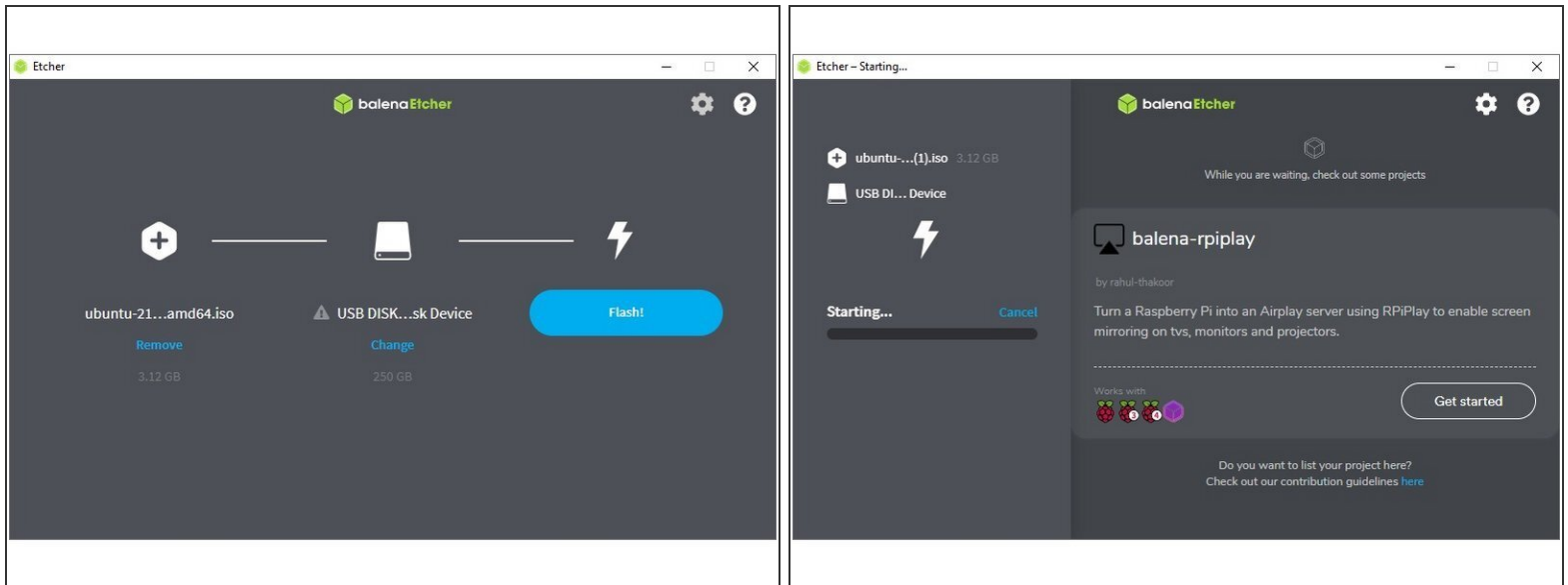
**NOTE:** This is an [Officially Supported Linux Distribution](#). [Learn more here](#).



### PARTS:

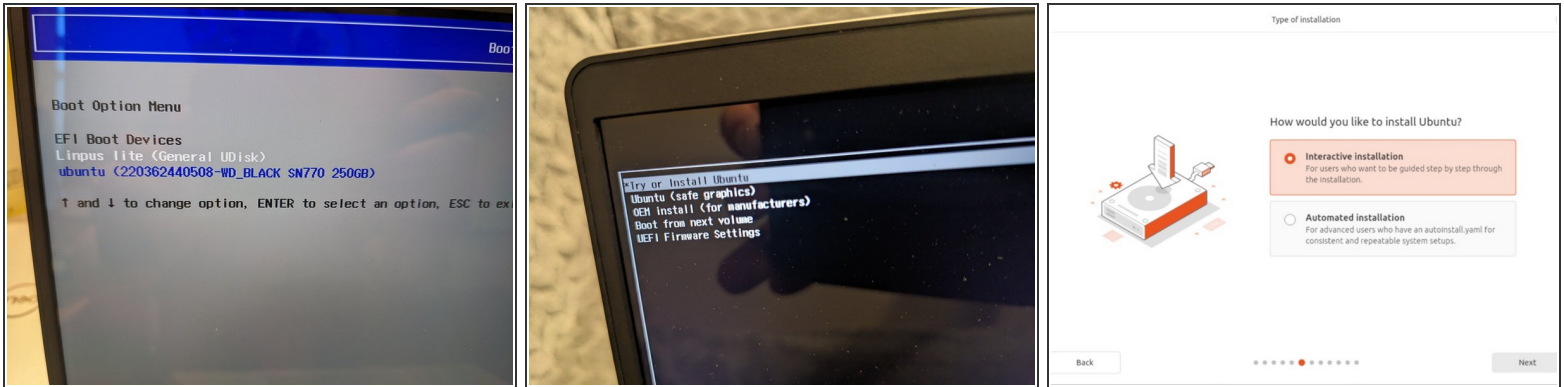
- [Storage Expansion Card](#) (1)

## Step 1 — Preparing Ubuntu Installation Media



- First, download the latest [Ubuntu 24.04 LTS Desktop image](#) from Ubuntu's website. Ubuntu has a [detailed installation guide](#) that you can follow. We'll go through the steps in this Guide assuming you have a simple installation scenario of a fresh install on a blank drive.
- Download [balenaEtcher](#) as a tool to create the USB installer from the ISO. balenaEtcher is available for Windows, MacOS, and Linux. You can either install it or download the portable version that runs directly from the executable.
- Launch balenaEtcher. Insert your USB drive (8GB or larger). Click on "Flash from file" and select the ubuntu-24.04-desktop-amd64.iso that you downloaded. Click on "Select target" and choose your USB drive. Click "Flash" and wait a minute or two for it to complete.
- Once the USB drive creation is complete, you can close balenaEtcher and eject the USB drive from your OS.

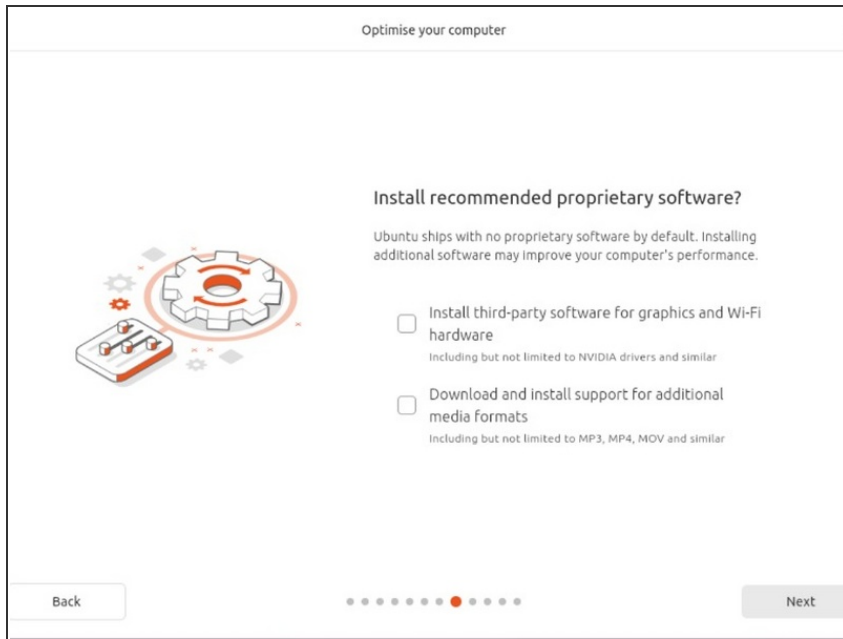
## Step 2 — Booting to Live Ubuntu USB



⚠ If you have [secure boot](#) enabled in BIOS, Ubuntu is going to ask you to check the box indicating YES on installing 3rd party drivers. This is expected behavior if you wish to have secure boot enabled. Enabling secure boot is completely optional and not necessary for normal operation, it's a personal choice.

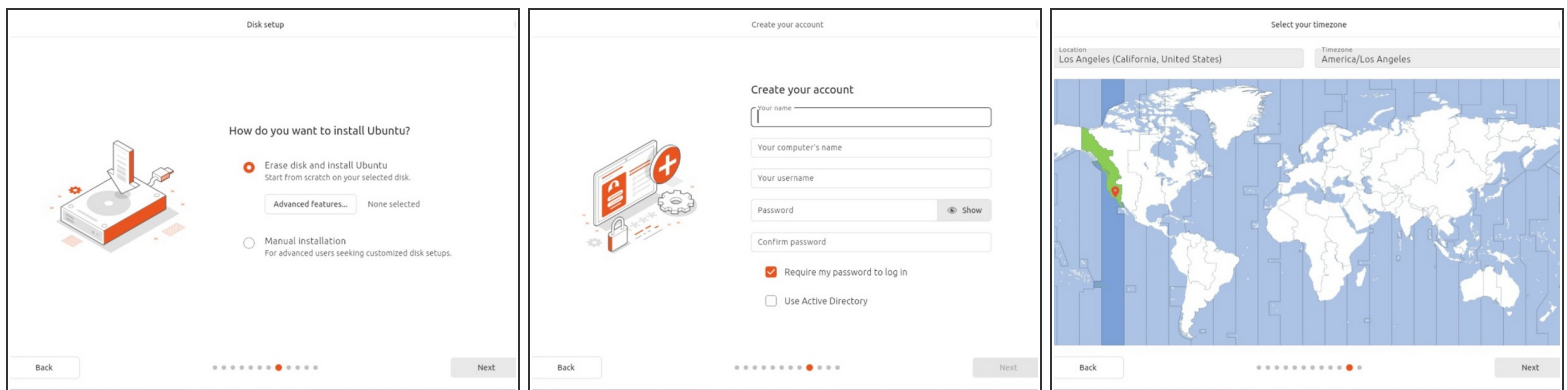
- Insert the USB drive into your powered off Framework Laptop 13, and then power on. If you have an existing OS installed on the Storage drive in your laptop, immediately after the power light comes on begin rapidly tapping (continuously ) the F12 key - you must begin tapping well before you see the Framework logo.
- Select Linpus lite (General UDisk) with your arrow keys. Enter key.
- Next, you will see a white box with Preparing Ubuntu. From there, you will be presented with the option to select your language.
- Next option is to select your accessibility options. Then keyboard layout and your option for how you wish to connect to the Internet. We recommend you do at this stage.
- Soon, you may be asked to "update your installer. Do so if connected to the internet. Close the installer, then open it again from the desktop on the lower right corner.
- Go through the steps you did previously, then select your install type - most people will want interactive.

## Step 3 — Installing Ubuntu Part 1



- While connected to your network, select Normal installation, Download updates while installing Ubuntu and Install third party software, then press continue. This process may take a few minutes and appear to idle a bit, then the next screen appears - installation type.

## Step 4 — Installing Ubuntu Part 2



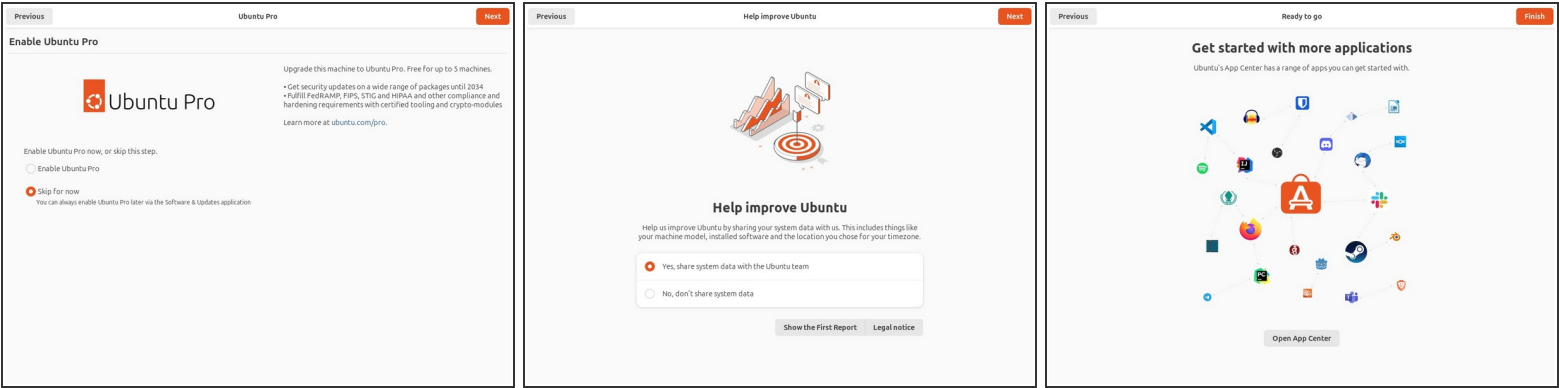
- Next we'll choose the installation type. Erase everything is the correct choice for users with a new DIY Framework Laptop 13 looking to use the entire hard drive for Ubuntu.
- Press Install Now, then when prompted, then click on Continue.
- Next you'll be prompted to choose your location on the world map. Select your time zone location, click Continue.
- Create a username, a computer name (anything will do), and a password to login with. Also make sure you select Require a password to log in. Then press Continue.

## Step 5 — Installing Ubuntu Part 3



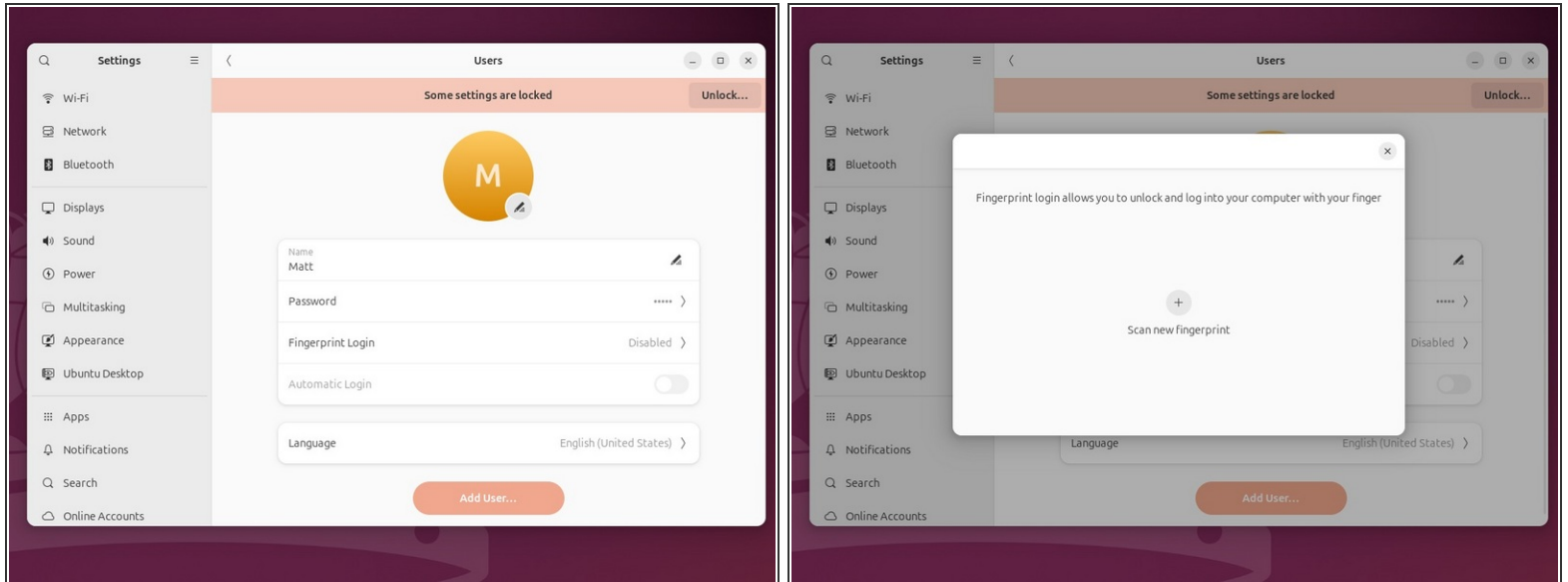
- Once the Ubuntu installer is completely done, you will see a box indicating that it's complete and time to reboot. Click Continue testing if you prefer or if you're comfortable and done testing, click the Reboot Now button.
- After pressing the Restart Now button, it will sit at a black screen for a bit, then you will be prompted to "Remove the installation Medium, then press Enter."

## Step 6 — Installing Ubuntu Part 4



- Once rebooted, simply follow the prompts for whether or not you are using Ubuntu Pro and if you wish to send back error reports.
- Repeat this process with the other screens as seen in the provided images, while making selections and choices that best match your needs.

## Step 7 — Installing Ubuntu Part 6 (Fingerprint Login)



- Let's setup fingerprint login. Click on the horizontal bar in the upper left, search for user.
- Choose Fingerprint Login. Then select Scan new fingerprint. Select your desired fingerprint. Carefully tap your finger tip on the sensor (power button). You may need to try a few attempts as everyone's prints are different.
- Once it's successful, you will see the word Complete.
- If you're experiencing issues getting your fingerprint reader working, please [follow our help guide](#) to get your reader working for you on Ubuntu.

## Step 8 — Completing Setup



- We're almost done. Please follow the links to your individual Framework Laptop 13 model (11th, 12th or 13th Gen Intel Core)
  - ① [Click here](#) for the completion guide for **13th Gen Intel Core**
  - ① [Click here](#) for the completion guide for **12th Gen Intel Core**.
  - ① [Click here](#) for the completion guide for **11th Gen Intel Core**.
  - ① [Click here](#) for the completion guide for **AMD Ryzen 7040 Series**.
- ✦ Our recommendations for [Optimizing Ubuntu Battery Life](#).



## Step 9 — Recommended: Updating to the latest firmware



- Before updating to the latest firmware, let's make sure we verify which BIOS were running. [Please follow this guide.](#)
  - ⚠ If you have Intel 11th Gen Intel Core, you can check [here for the latest firmware](#).
  - ⚠ If you have Intel 12th Gen Intel Core, you can check [here for the latest firmware](#).
  - ⚠ If you have Intel 13th Gen Intel Core, you can check [here for the latest firmware](#).
  - ⚠ If you have AMD Ryzen 7040 Series, you can check [here for the latest firmware](#).

## Step 10 — Troubleshooting Ubuntu 24.04



- Expecting two-finger right clicking and need help? [The touchpad help guide](#) is here.
- Please visit our [troubleshooting guide](#) first.
- If you need additional help, feel free to visit our [active support community](#).

Enjoy using Ubuntu on your Framework Laptop 13! If you have any questions or run into any issues, we recommend bringing them to the Community in the [Ubuntu 24.04 topic](#). Members of the Framework team participate in discussions there.