



Ubuntu 22.04 LTS Installation on the Framework Laptop 16

How to install Ubuntu 22.04 LTS Linux on a Framework Laptop 16

Written By: Matt Hartley



INTRODUCTION

Once you have your Framework Laptop 16 set up following the [Quick Start Guide](#), you're ready to install your preferred OS. Ubuntu 22.04 LTS works fantastically well.

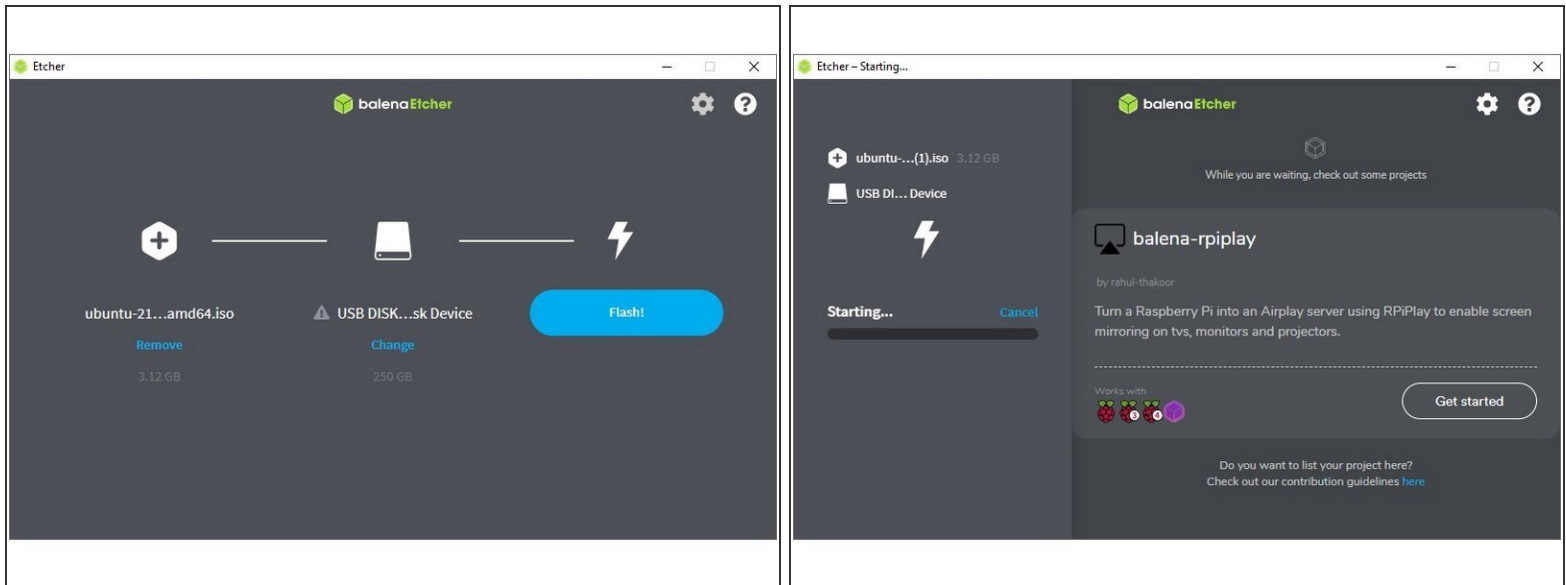
NOTE: This is an [Officially Supported Linux Distribution](#). [Learn more here](#).



PARTS:

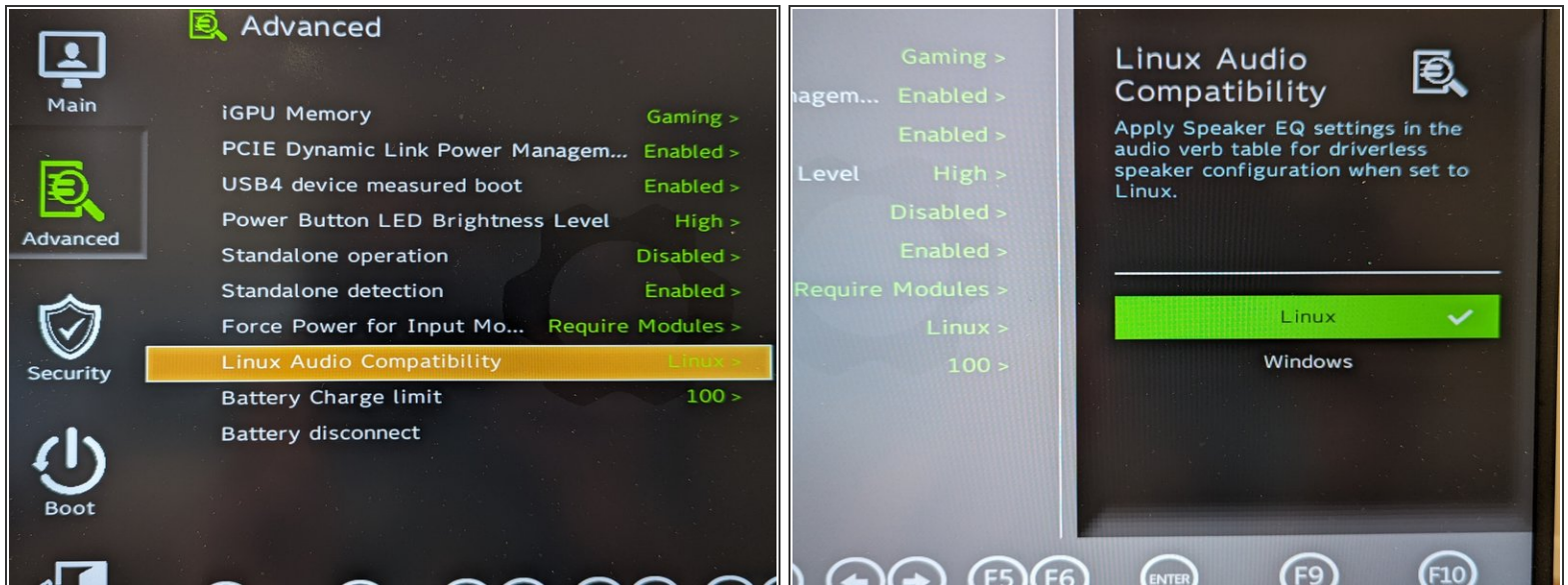
- [Storage Expansion Card](#) (1)
-

Step 1 — Preparing Ubuntu Installation Media



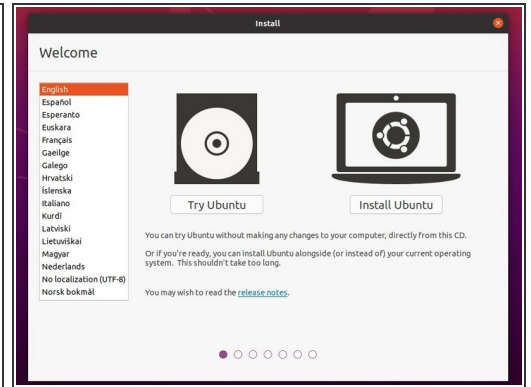
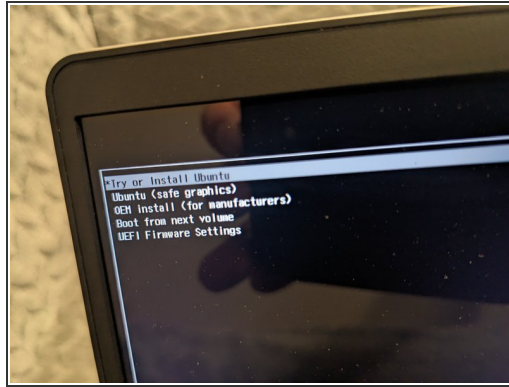
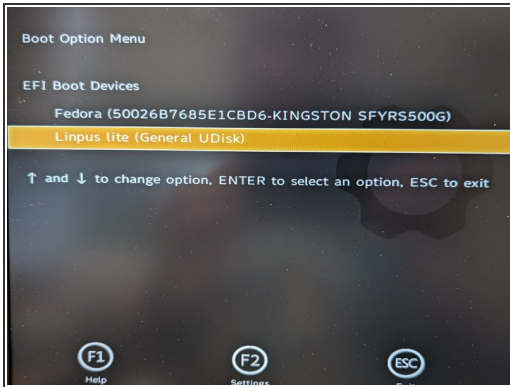
- First, download the latest [Ubuntu 22.04 LTS Desktop image](#) from Ubuntu's website. Ubuntu has a [detailed installation guide](#) that you can follow. We'll go through the steps in this Guide assuming you have a simple installation scenario of a fresh install on a blank drive.
- Download [balenaEtcher](#) as a tool to create the USB installer from the ISO. balenaEtcher is available for Windows, MacOS, and Linux. You can either install it or download the portable version that runs directly from the executable.
- Launch balenaEtcher. Insert your USB drive (8GB or larger). Click on "Flash from file" and select the ubuntu-22.04-desktop-amd64.iso that you downloaded. Click on "Select target" and choose your USB drive. Click "Flash" and wait a minute or two for it to complete.
- Once the USB drive creation is complete, you can close balenaEtcher and eject the USB drive from your OS.

Step 2 — Linux Audio Compatibility



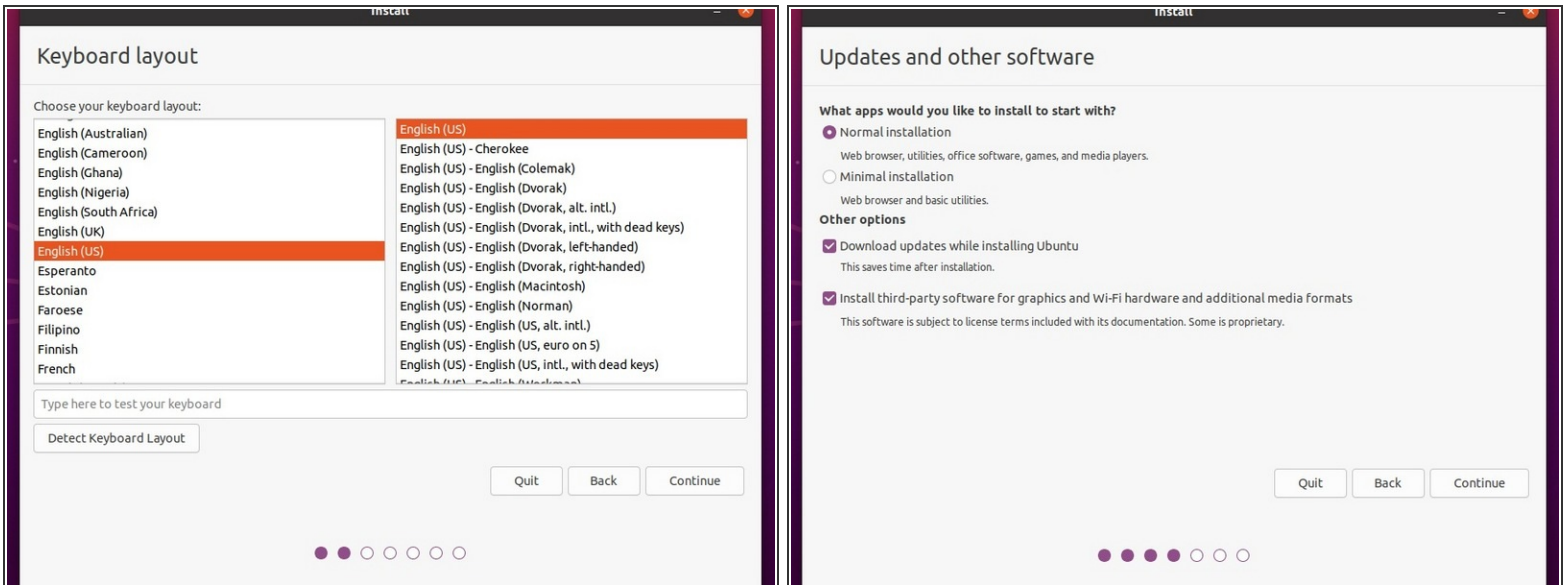
- **Before we begin the installation process** with the Live USB, let's make sure you have your Linux Audio Compatibility set to Linux in the BIOS.
- Power on the laptop, repeatedly tapping F2 in order to get into the BIOS. Note: If you're having trouble with this, try again, holding down the Fn key while rapidly tapping F2.
- In BIOS mode, arrow key over to Setup Utility. Press the enter key. Arrow down to Advanced. Then arrow right, then arrow down to Linux Audio Compatibility. Press enter.
- A new box for Linux Audio Compatibility will appear, arrow to Linux, then press enter. Now press F10 key to reboot.
 - ❗ Now we don't have an OS installed yet. So the reboot won't get us to a running operating system and we fully expect to see an error to this point. Simply press the power button to shutdown.
 - ❗ The next step is to install Ubuntu LTS at Step 3.

Step 3 — Booting to Live Ubuntu USB



- ⚠ If you have [secure boot](#) enabled in [BIOS](#), Ubuntu is going to ask you to check the box indicating YES on installing 3rd party drivers. This is expected behavior if you wish to have secure boot enabled. Enabling secure boot is completely optional and not necessary for normal operation, it's a personal choice.
- Insert the USB drive into your powered off Framework Laptop 16, and then power on. If you have an existing OS installed on the Storage drive in your laptop, immediately after the power light comes on begin rapidly tapping (continuously) the F12 key - you must begin tapping well before you see the Framework logo.
 - Select Linpus lite (General UDisk) with your arrow keys. Enter key.
 - Next select Try or Install Ubuntu. Hit the enter key.
 - After a few seconds, you're in! If you just want to try Ubuntu out, you can click on the Try Ubuntu button and browse through the live USB version of it without touching the internal storage drive. If you do want to install Ubuntu to the internal storage drive, go on to the next step.

Step 4 — Installing Ubuntu Part 1



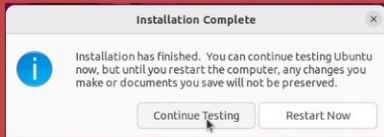
- Select the keyboard language you'd like to use. On the next screen after clicking Continue, connect to your WiFi network if available.
- While connected to your network, select Normal installation, Download updates while installing Ubuntu and Install third party software, then press continue. This process may take a few minutes and appear to idle a bit, then the next screen appears - installation type.

Step 5 — Installing Ubuntu Part 2



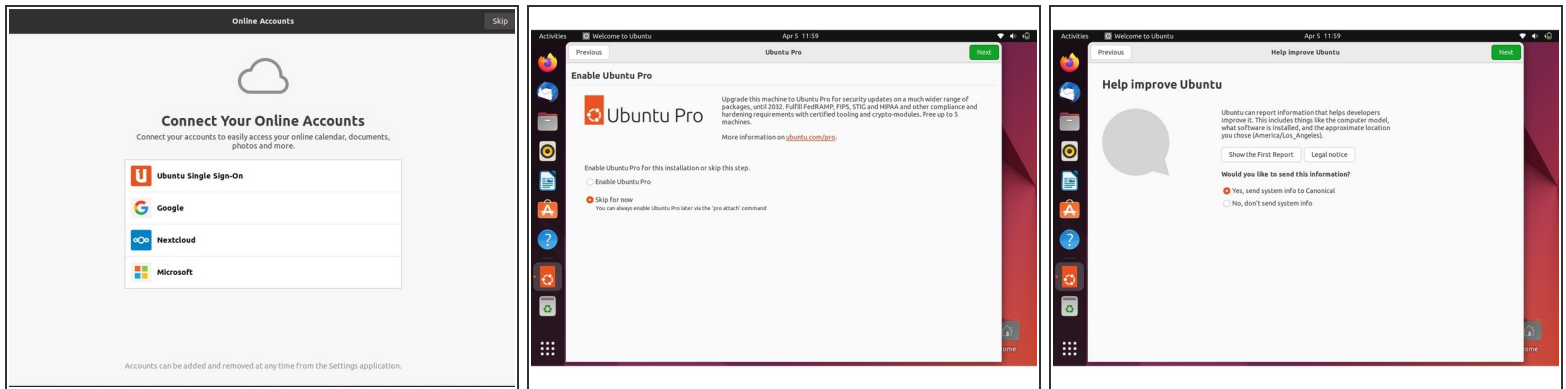
- Next we'll choose the installation type. Erase everything is the correct choice for users with a new Framework Laptop 16 (AMD Ryzen™ 7040 Series) looking to use the entire hard drive for Ubuntu.
- Press Install Now, then when prompted, then click on Continue.
- Next you'll be prompted to choose your location on the world map. Select your time zone location, click Continue.
- Create a username, a computer name (anything will do), and a password to login with. Also make sure you select Require a password to log in. Then press Continue.

Step 6 — Installing Ubuntu Part 3



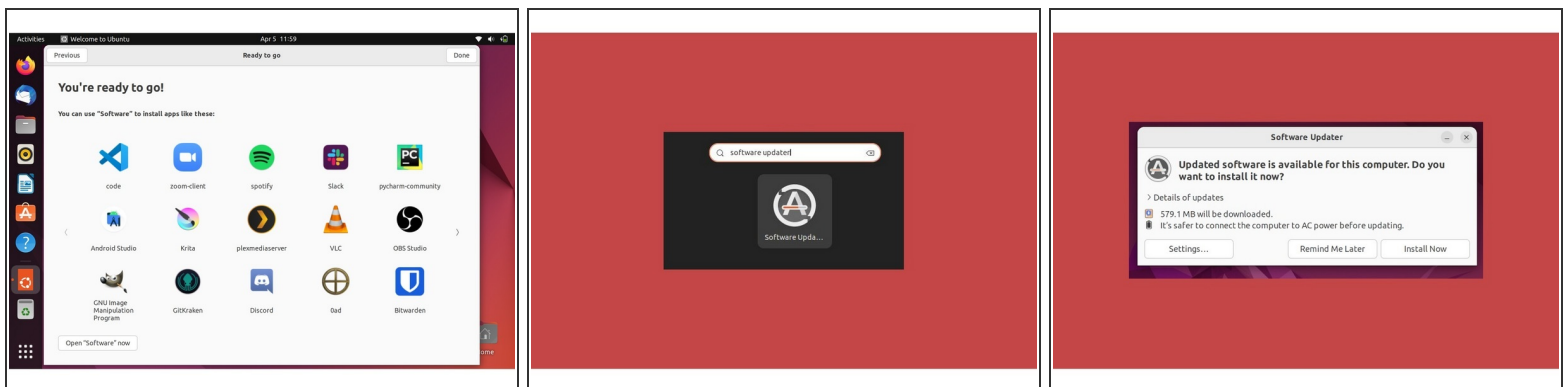
- Once the Ubuntu installer is completely done, you will see a box indicating that it's complete and time to reboot. Click Continue testing if you prefer or if you're comfortable and done testing, click the Reboot Now button.
- After pressing the Restart Now button, it will sit at a black screen for a bit, then you will be prompted to "Remove the installation Medium, then press Enter."

Step 7 — Installing Ubuntu Part 4



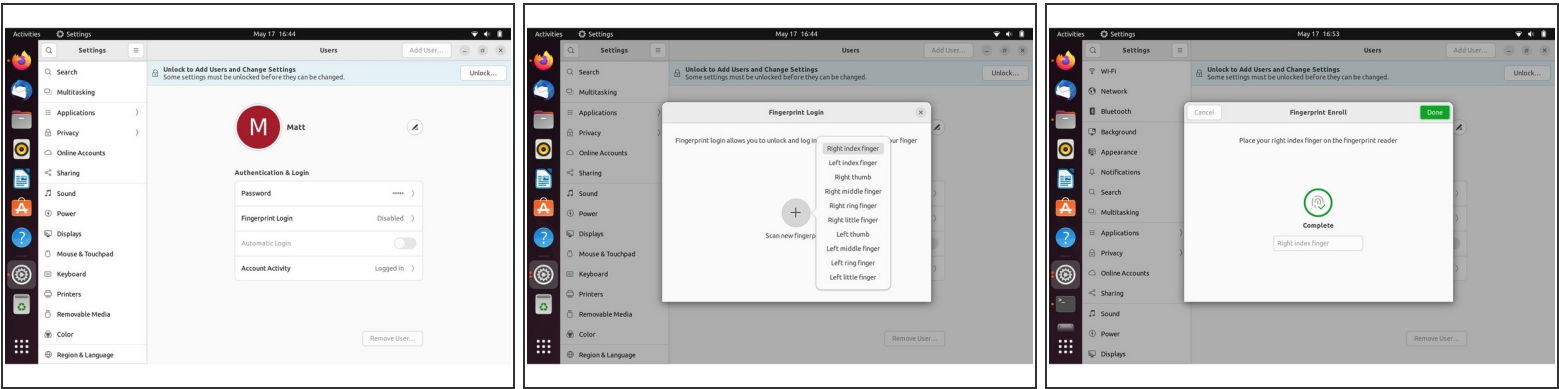
- Once rebooted, you'll be prompted to login, do so with your username and password. You'll then be prompted to login with your cloud accounts. I recommend skipping this as it's completely unnecessary. Press the skip button.
- Repeat this process with the other screens as seen in the provided images, while making selections and choices that best match your needs.

Step 8 — Installing Ubuntu Part 5



- Continue making your preferred selections through the Privacy page until you arrive at the "You're ready to go" screen. I recommend not installing software at this stage, instead clicking the Done button on the window.
- After clicking on the Done button, browse to Activities in the upper left, search Software Updater. Open the application.
- You may already have a window like the third image shown on the left appear before opening the updater - this happens and is totally fine. If this happens, go ahead and select Install now.

Step 9 — Installing Ubuntu Part 6 (Fingerprint Login)



- Let's setup fingerprint login. Click on Activities, search for user.
- Choose Fingerprint Login. Then select Scan new fingerprint. Select your desired fingerprint. Carefully tap your finger tip on the sensor (power button). You may need to try a few attempts as everyone's prints are different.
- Once it's successful, you will see the word Complete.

Step 10 — Completing Setup

This is for the Framework Laptop 16 (AMD Ryzen™ 7040 Series) ONLY.

This will:

- Update your Ubuntu install's packages.
- Install the recommended OEM kernel and provide you with an alert should the OEM kernel needing updating.

Step 1

- Browse to Activities in the upper left corner, click to open it.
- Type out the word terminal, click to open it.
- Click on the small icon shown in the image below to copy the code below in the gray box, right click/paste it into the terminal window.
- Then press the enter key, user password, enter key, **reboot**.

```
sudo apt update && sudo apt upgrade -y && sudo snap refresh && sudo apt-get install linux-oem-22.04c -y
```

TIP: You can use the little clipboard icon to the right of the code to copy to your clipboard.

```
n>max) {max=ve  
"$latest_oem_kernel"  
cklist=hid_sensor_hut  
autostart/kernel_chec
```

- We're almost done. Please follow the links to your individual Framework Laptop 16.
 - ① [Click here](#) for the completion guide for **Framework Laptop 16 (AMD Ryzen™ 7040 Series)**.
- ✦ Our recommendations for [Optimizing Ubuntu Battery Life](#).

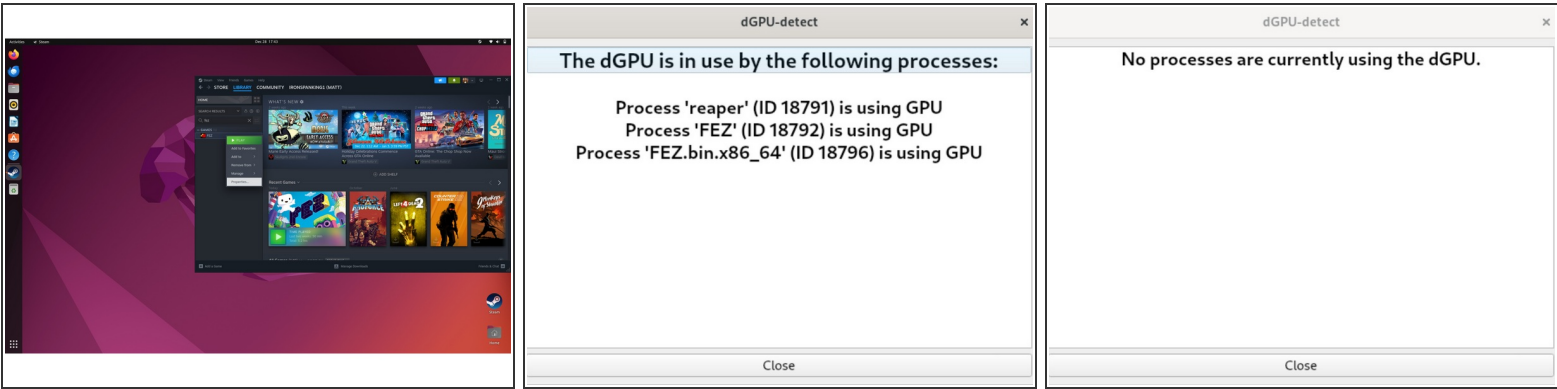
This document was generated on 2024-04-27 08:26:56 PM (MST).

© 2024

guides.frame.work/

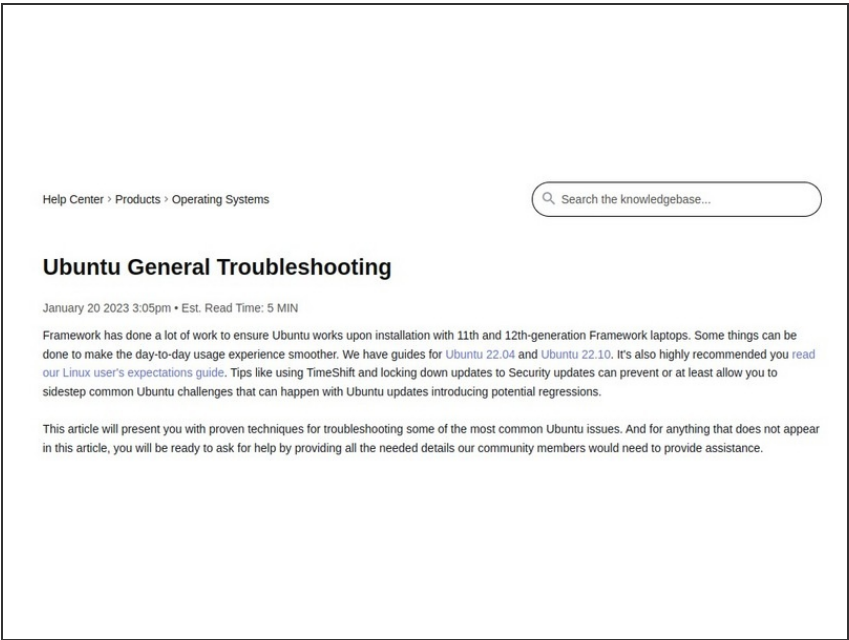
Page 10 of 12

Step 11 — Using Discrete Graphics with Steam



- ✦ If you are looking to run Steam games, please follow our guide links below.
 - 📘 [One NVMe Drive Guide](#).
 - 📘 [Two NVMe Drives Guide](#).
- ⚠️ If you are unsure if something is using the dGPU, [use this ApplImage program](#).
- 📘 For all other applications, simply run your software with `DRI_PRIME=1 cheese` (or whatever the application name is).

Step 12 — Troubleshooting Ubuntu 22.04



- Expecting two-finger right clicking and need help? [The touchpad help guide](#) is here.
- Please visit our [troubleshooting guide](#) first.
- If you need additional help, feel free to visit our [active support community](#).

Enjoy using Ubuntu on your Framework Laptop 16! If you have any questions or run into any issues, we recommend bringing them to the Community in the [Ubuntu 22.04 topic](#). Members of the Framework team participate in discussions there.