



Battery

Written By: Sandy Qualey-Dobson



Step 1 — Open Input Deck Latches



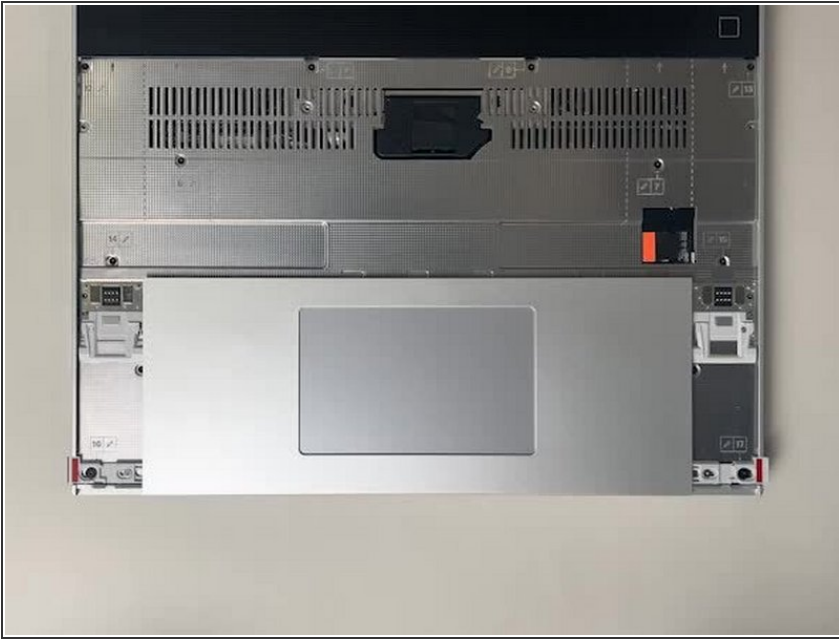
- In order to remove the Input Modules from the Framework Laptop 16, begin by opening the Input Deck Latches on each side of the Laptop.
- ⓘ When the latches are open you can see the red printed on the latch.

Step 2 — Remove Touchpad Spacers



- To remove the Touchpad Spacers, slide them down and then they will lift away easily.
- ⚠ If there is resistance, make sure that the Input Deck Latches are open (see previous step).

Step 3 — Remove Touchpad Module



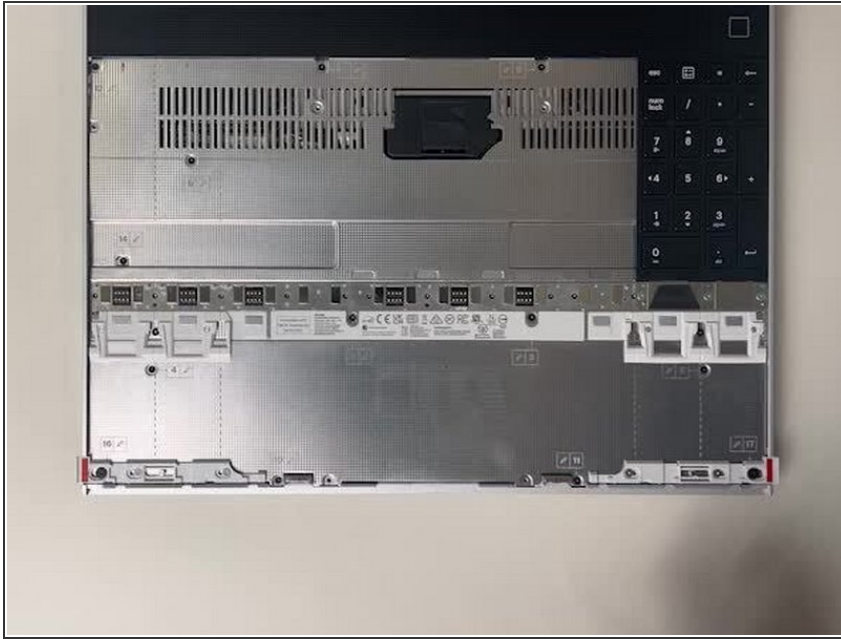
- After removing the Spacers, the Touchpad module can be removed in the same way. Gently slide it downwards from both sides and then lift away as shown.

Step 4 — Remove the Keyboard



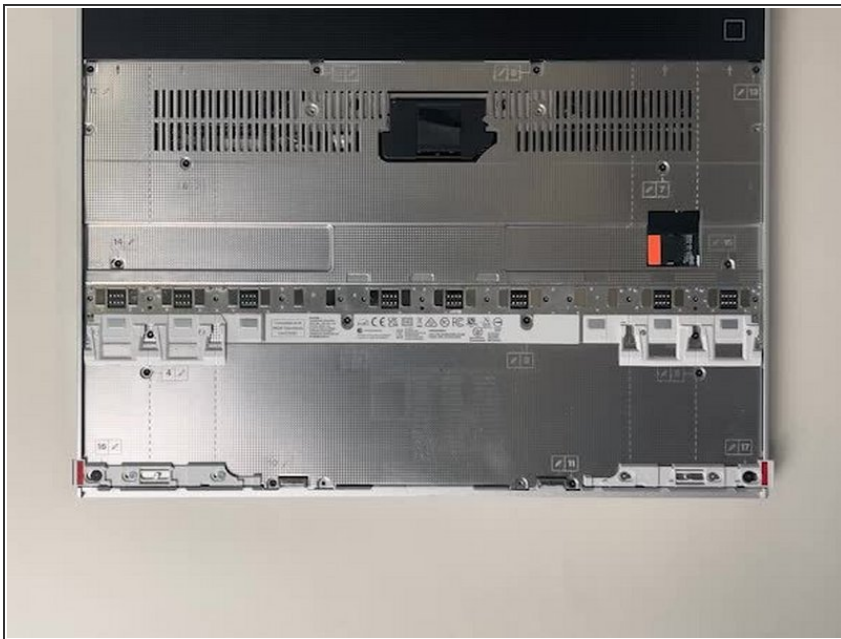
- To remove the Keyboard lift from the bottom using the pull tabs, and once lifted up the Keyboard module should lift out without resistance.
- ① If your pull tabs are no longer attached, you can carefully use the spudger side of the Framework Screwdriver to lift the module away.

Step 5 — Remove Input Modules



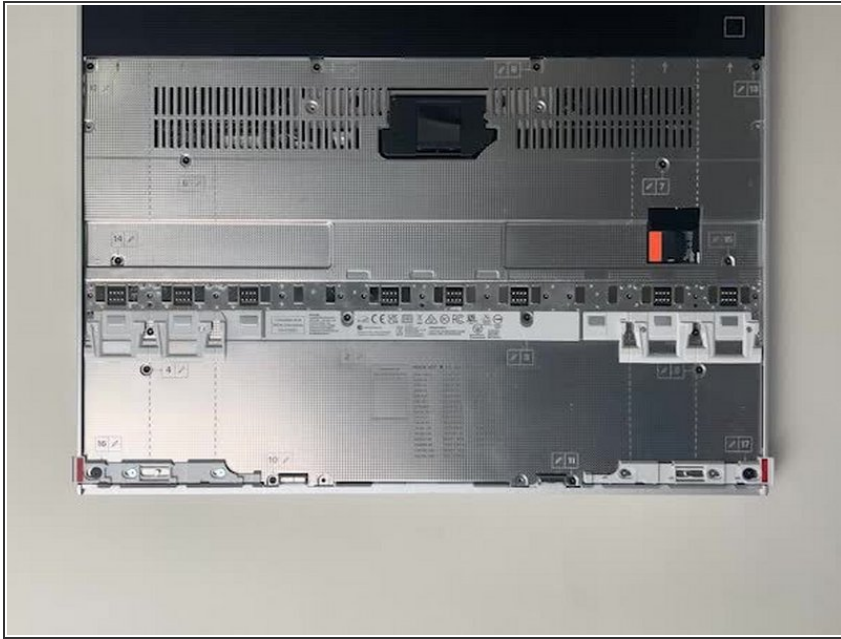
- Remove your Input Modules or Spacers in the same way as the Keyboard, lifting from the bottom using the pull tabs as shown.

Step 6 — Disconnect Mid Plate Cable



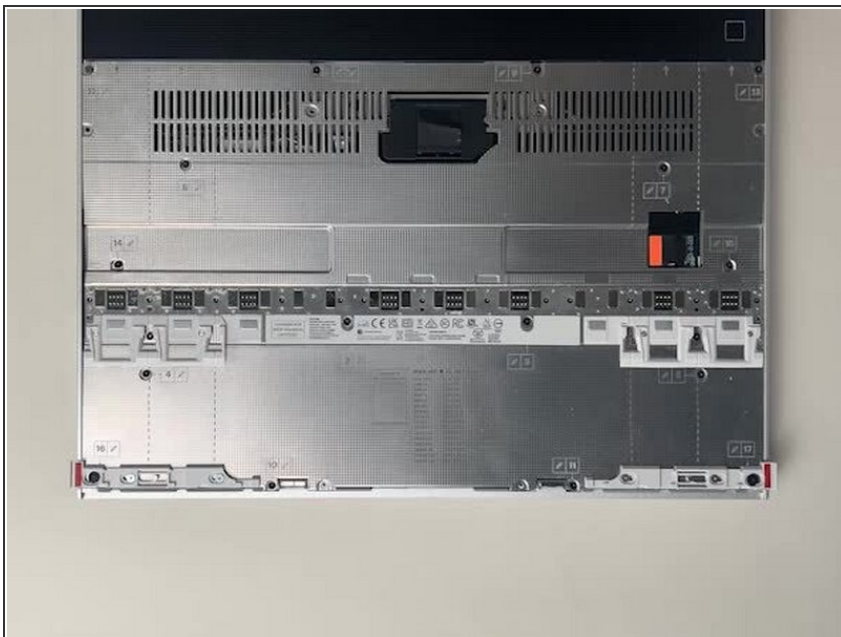
- ⓘ This cable is labeled with the Number 1 to indicate that it should be disconnected before loosening the Mid Plate Fasteners.
- ⚠ It is important to disconnect this cable before removing the Mid Plate as leaving it attached could damage the cable.

Step 7 — Loosen Mid Plate fasteners



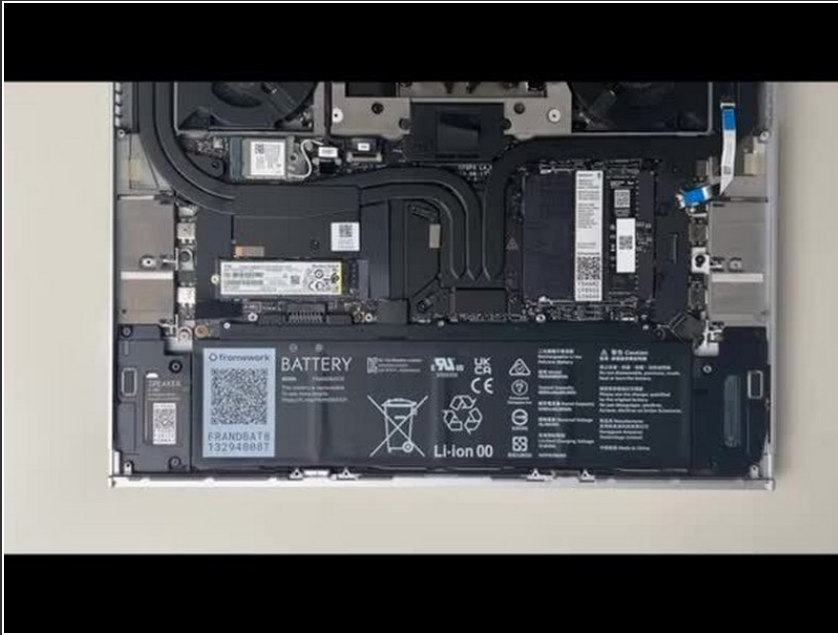
- Using the T5 bit in the Framework Screwdriver unscrew the 16 captive fasteners attaching the Mid Plate to the Bottom Cover. These are numbered from 2-17 (since the Mid Plate Cable is number 1)
- ⓘ These fasteners are captive, meaning they will remain attached to the Mid Plate when fully loosened.
- ⚠ Do not use powered tools for this step as this risks damage to the fasteners, as with all fasteners in the Framework Laptop 16 these can be easily loosened using the included Framework Screwdriver

Step 8 — Remove the Mid Plate



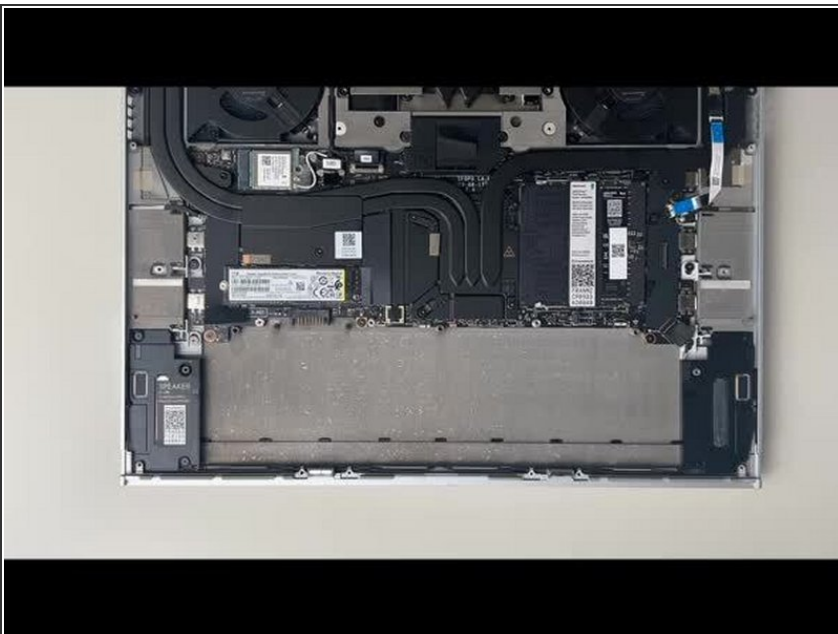
- Carefully lift the Mid Plate away from the Bottom Cover and set it aside.
- ⓘ If the Mid Plate seems stuck, check the fasteners are all loosened, there should be little resistance.

Step 9 — Remove the Battery



- Loosen the 3 fasteners, note that these are captive fasteners that will remain attached to the Battery.
- Lift the pull tab up to disconnect the Battery then lift it out to remove it from the Bottom Cover.

Step 10 — Install the Battery



- Lower the Battery into place, first aligning the bottom of Battery in the bottom cover as shown, then push

down gently to attach the connector to the Mainboard.

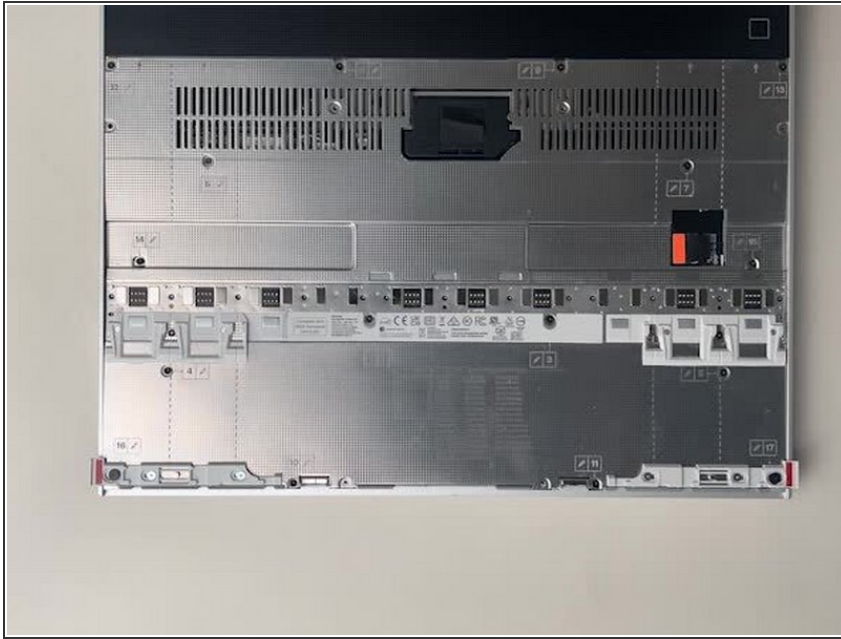
- Tighten the 3 captive fasteners to hold the Battery in place.

Step 11 — Install the Mid Plate



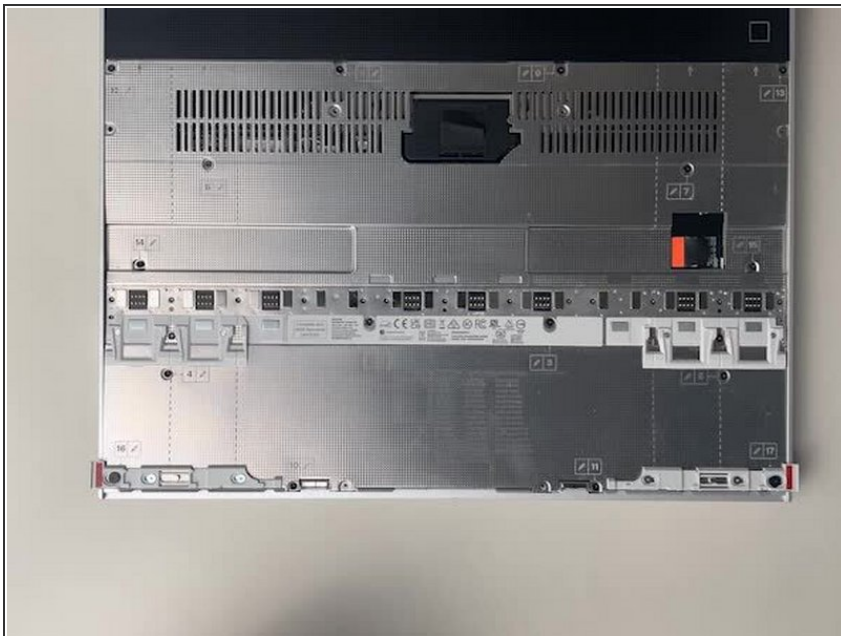
- Place the Mid Plate back onto the system, aligning the holes in the Mid Plate with the two guide posts.

Step 12 — Connect Mid Plate Cable



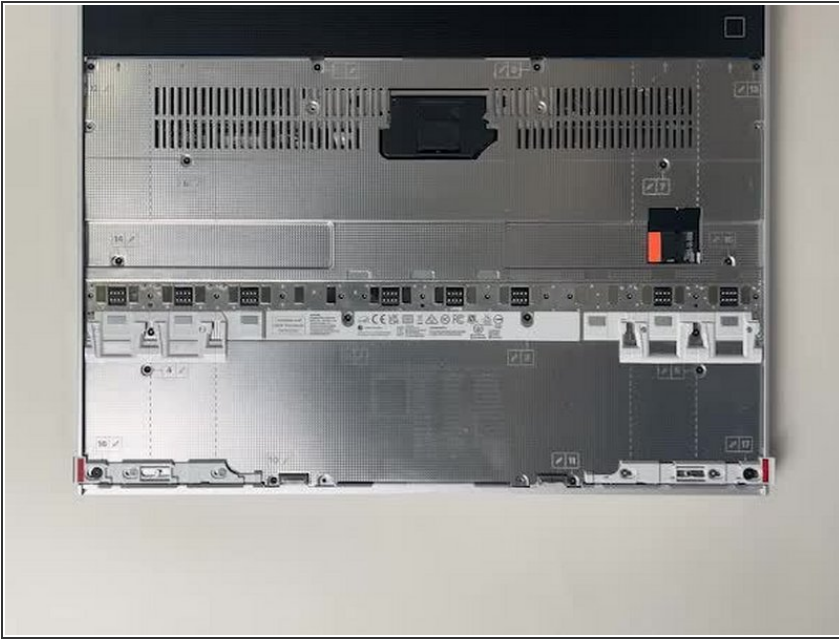
- Using the pull tab, gently press the Mid Plate connector down to connect it to the Mainboard.

Step 13 — Tighten the Mid Plate fasteners



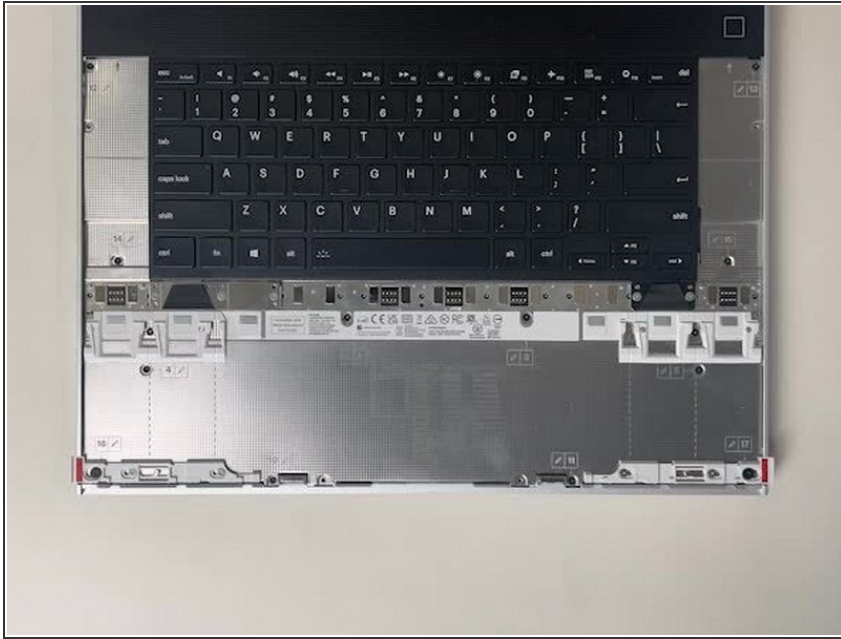
- Using the T5 bit in the Framework Screwdriver tighten the Mid Plate fasteners.
 - These fasteners are labelled 2-17 (since the Mid Plate cable is number 1) and should be tightened in order, starting with 2 and ending with 17.
- ⚠ Do not overtighten these fasteners, and we recommend against the use of powered tools for these or any other fasteners on the Framework Laptop 16.

Step 14 — Install the Keyboard



- ① Please see our guide [here](#) on possible Input Module configurations.
- Holding from the pull tabs at the bottom of the Keyboard module, line it up with the dashed guide lines printed on the Mid Plate. Note that you can align a Keyboard so that it is either along the left edge, the right edge, or centered. With the Keyboard held at a 20 degree angle, slide it up into place.
- The notches along the top of the Keyboard will fit into the corresponding alignment guides under the Ventilation Plate.
- Lower the Keyboard gently into place, it should snap in place magnetically and sit flat.
- ① Ensure that the pins in the Mid Plate to the left and right of the Input Module Connector align into the corresponding holes in the Keyboard module.

Step 15 — Install Input Modules



- Next install, two Spacer Modules, an LED Matrix, a Numpad, an RGB Macropad, or whichever other combination of two Small or one Medium sized Input Module you have.
- Slide these in at an angle and lower into place, the same way the Keyboard was installed.
- ⓘ Whichever Input modules you chose to install, you should have no empty spaces in the top row before proceeding to the next step.

Step 16 — Install Touchpad Module



- Place the Touchpad Module flat, slightly below the Keyboard as shown.
- ① Like the Keyboard, you can confirm it is properly aligned by lining it up to the dashed lines on the Mid Plate.
- Applying gentle downward pressure to keep the Touchpad module flat, slide it up into place.
- ★ Remember that the Input Deck Latches should still be open at this point, otherwise the Touchpad Module won't slide on.
- ① The Touchpad Module can be installed either directly below the Keyboard or offset by one space to the right. For example, the Keyboard can have the Touchpad below it, or the Keyboard can be left-aligned while the Touchpad is centered.

Step 17 — Install Touchpad Module Spacers



- Just like installing the Touchpad module, place the Touchpad Spacers flat on the Input Deck, slightly below the Keyboard or Spacers above.
- Applying gentle pressure, slide the Touch Module Spacers into place.
- ⓘ With the Touchpad Module Spacers installed there should now be no empty spaces on the Input Deck.

Step 18 — Close Input Deck Latches



- Once all Input Modules are installed, close both Input Deck Latches to secure them in place.