



Install Expansion Bay Shell

A guide on how to remove Graphics Module and Install an Expansion Bay Shell

Written By: Sandy Qualey-Dobson



INTRODUCTION

This guide takes you step by step through the process of removing a Graphics Module and installing an Expansion Bay Shell. If you have already removed the module in your Expansion Bay, you can skip to step 11.

TOOLS:

- [Framework Screwdriver](#) (1)
-

Step 1 — Shut down your Framework Laptop 16



⚠ Before beginning, make sure to shut down your Framework Laptop.

i If the system is still powered on, you will see the chassis intrusion lights flashing red and blue when the Touchpad and Input Modules are removed.

Step 2 — Open Input Deck Latches



- In order to remove the Input Modules from the Framework Laptop 16, begin by opening the Input Deck Latches on each side of the Laptop.
- i** When the latches are open you can see the red printed on the latch.

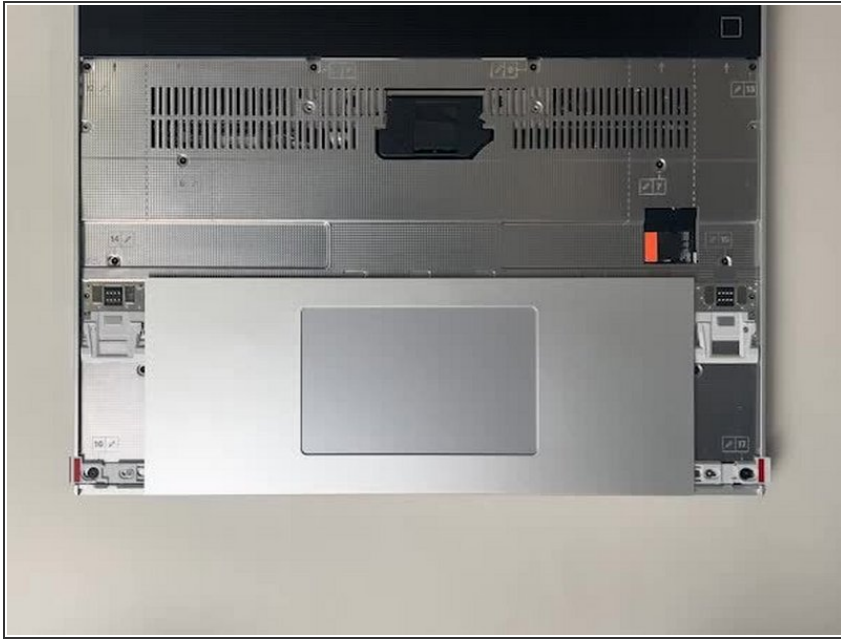
Step 3 — Remove Touchpad Spacers



- To remove the Touchpad Spacers, slide them down and then they will lift away easily.

⚠ If there is resistance, make sure that the Input Deck Latches are open (see previous step).

Step 4 — Remove Touchpad Module



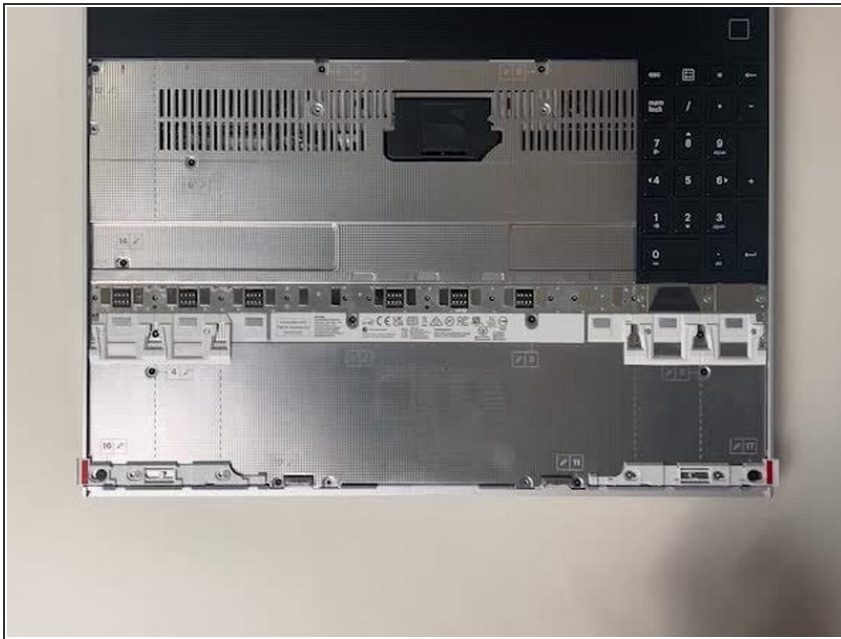
- After removing the Spacers, the Touchpad module can be removed in the same way. Gently slide it downwards from both sides and then lift away as shown.

Step 5 — Remove the Keyboard



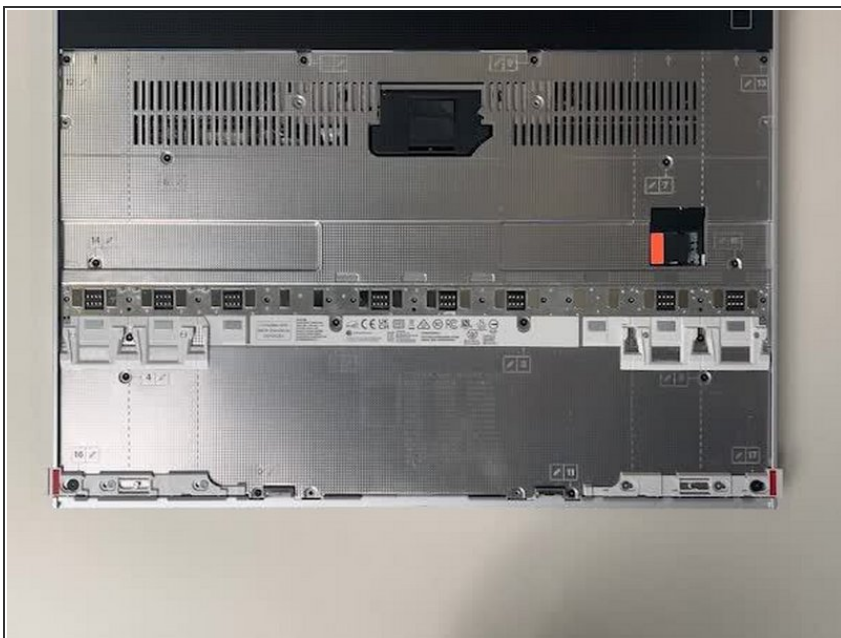
- To remove the Keyboard lift from the bottom using the pull tabs, and once lifted up the Keyboard module should lift out without resistance.
- ⓘ If your pull tabs are no longer attached, you can carefully use the spudger side of the Framework Screwdriver to lift the module away.

Step 6 — Remove Input Modules



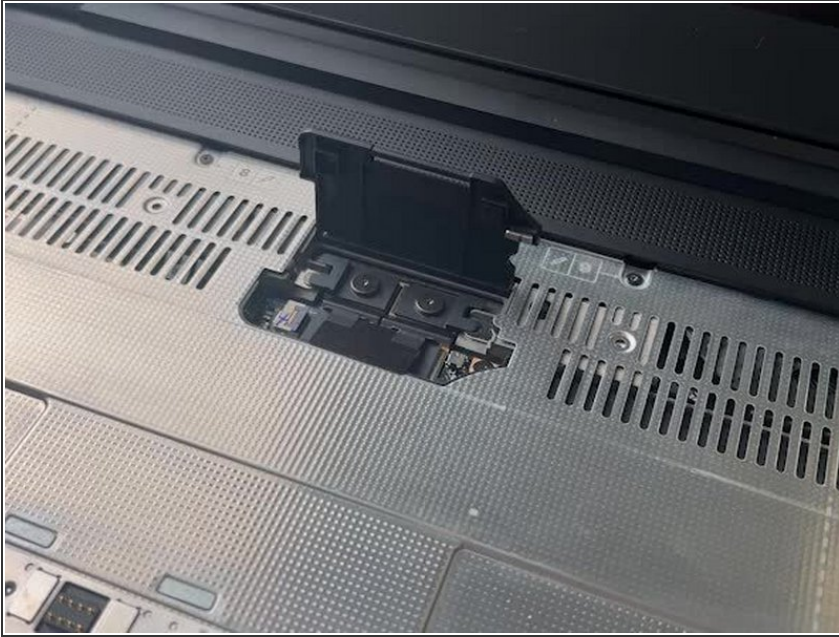
- Remove your Input Modules or Spacers in the same way as the Keyboard, lifting from the bottom using the pull tabs as shown.

Step 7 — Open the Interposer Door



- ⚠ Remember to power off the system and unplug the USB-C power cable before you open the Interposer Door.
- ⓘ You can access the Interposer and change the Expansion Bay Module without removing the Mid Plate.
- Flip open the Interposer Door using the pull tab provided.
- ⚠ Make sure that the door is closed again before closing the Laptop lid to avoid any risk of damage to the display.

Step 8 — Remove Graphics Module Interposer



- Loosen the 4 captive fasteners which attach the Interposer for the Graphics Module. 2 of these might be hidden under the pull tab.
- Once the fasteners are loosened, the Interposer can be lifted out using the pull tab as shown.

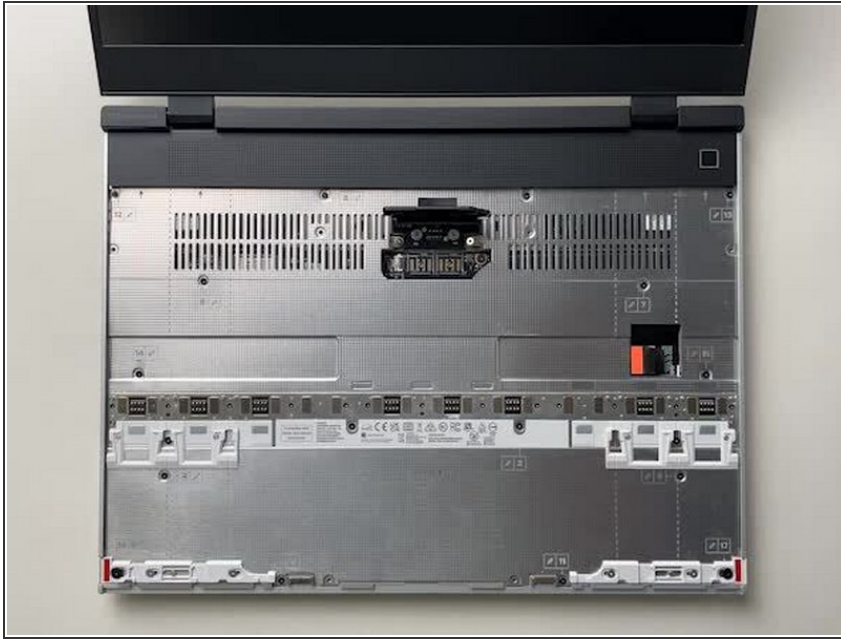
⚠ The Interposer should be easy to remove. If it feels stuck, make sure all 4 fasteners are fully loosened, and do not force it.

Step 9 — Loosen captive fasteners



- With the Interposer removed, loosen the 2 captive fasteners holding the Graphics Module in place.

Step 10 — Close Interposer door



⚠ Before closing the lid of the Laptop to remove or swap the Expansion Bay module, make sure the Interposer Door is closed.

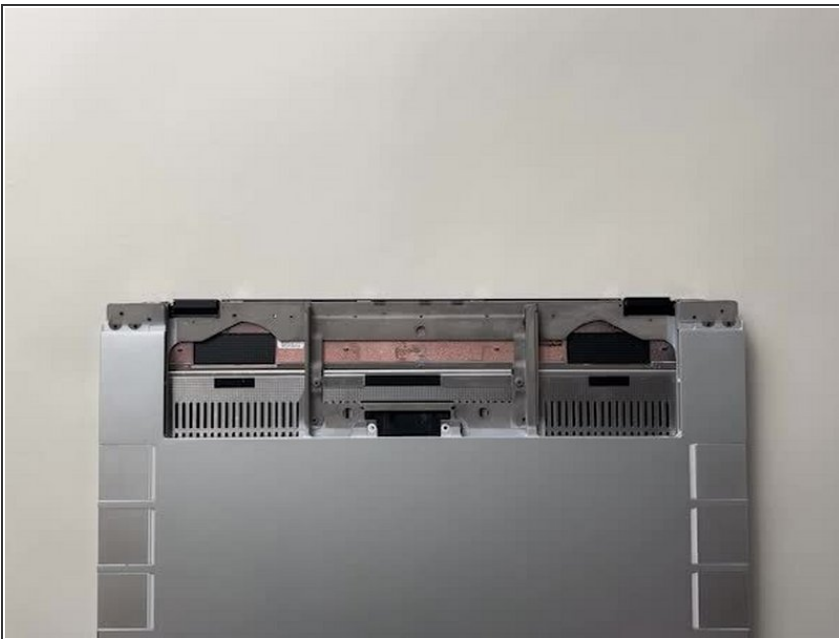
Step 11 — Remove the Graphics Module



- With the Framework Laptop 16 closed, turn the Laptop over and gently slide the Graphics Module up from the Expansion Bay slot as shown to remove it.

⚠ If the Graphics Module seems stuck do not force it. Make sure that the captive fasteners are correctly loosened (see previous steps).

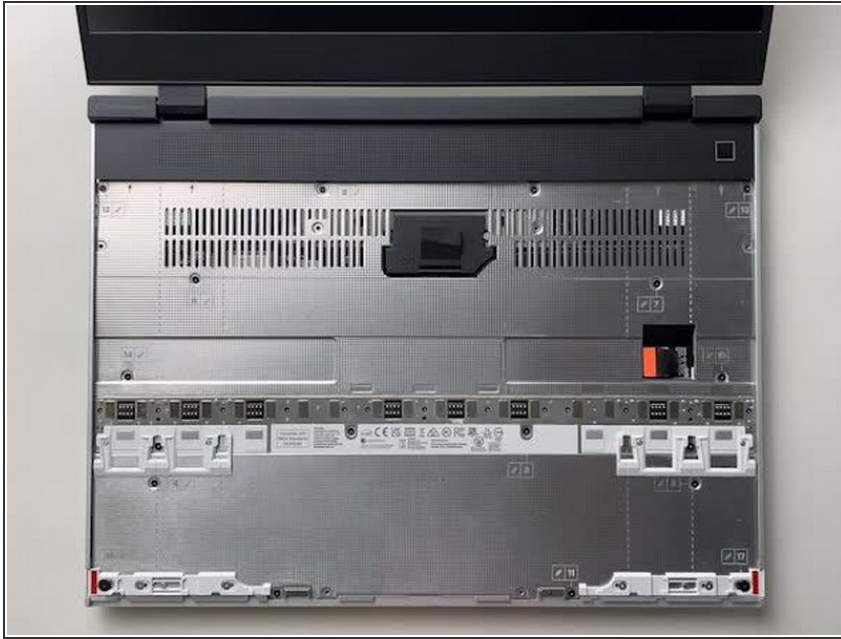
Step 12 — Install Expansion Bay Shell



- With the Framework Laptop 16 closed, align the Expansion Bay Shell with the Expansion Bay slot and gently slide it into place.
- You should hear the Expansion Bay Shell click into place when fully inserted.

⚠ There should be very little resistance when installing the module. If it is not sliding into place, do not force it. Remove the module and check that it is lined up correctly before trying again.

Step 13 — Open the Interposer Door



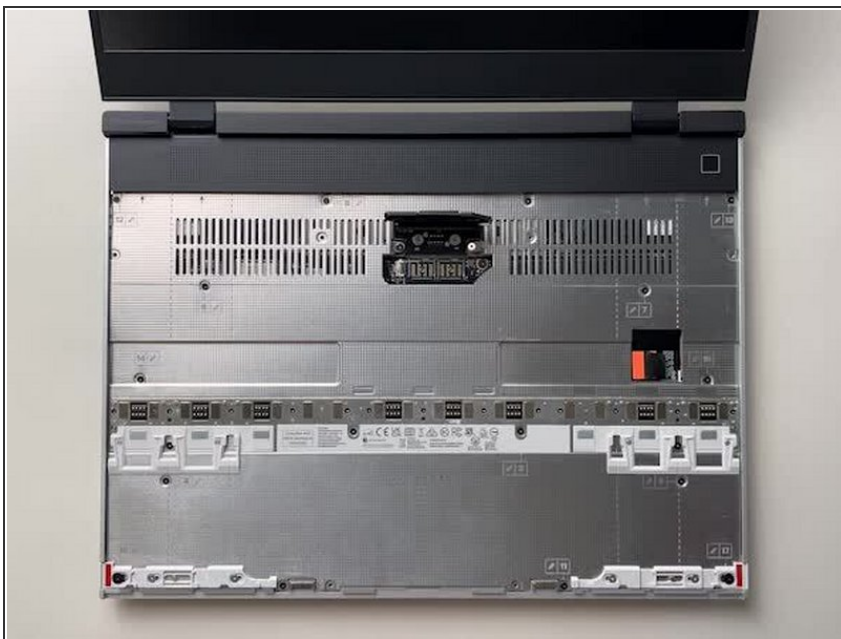
⚠ Remember to power off the system and unplug the USB-C power cable before you open the Interposer Door.

i You can access the Interposer and change the Expansion Bay Module without removing the Mid Plate.

- Flip open the Interposer Door using the pull tab provided.

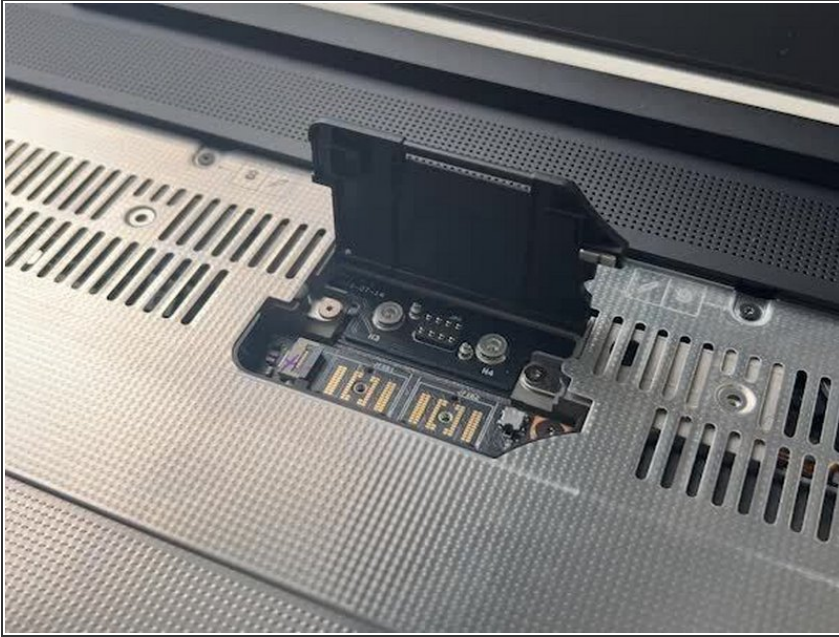
⚠ Make sure that the door is closed again before closing the Laptop lid to avoid any risk of damage to the display.

Step 14 — Tighten Captive Fasteners



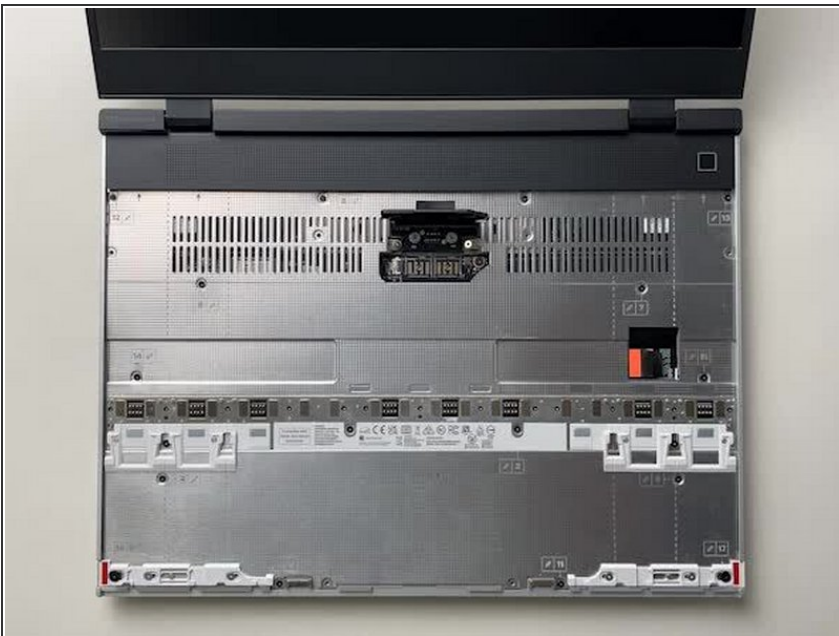
- Tighten the 2 captive fasteners to secure the Expansion Bay Shell in place.

Step 15 — Install Expansion Bay Shell Interposer



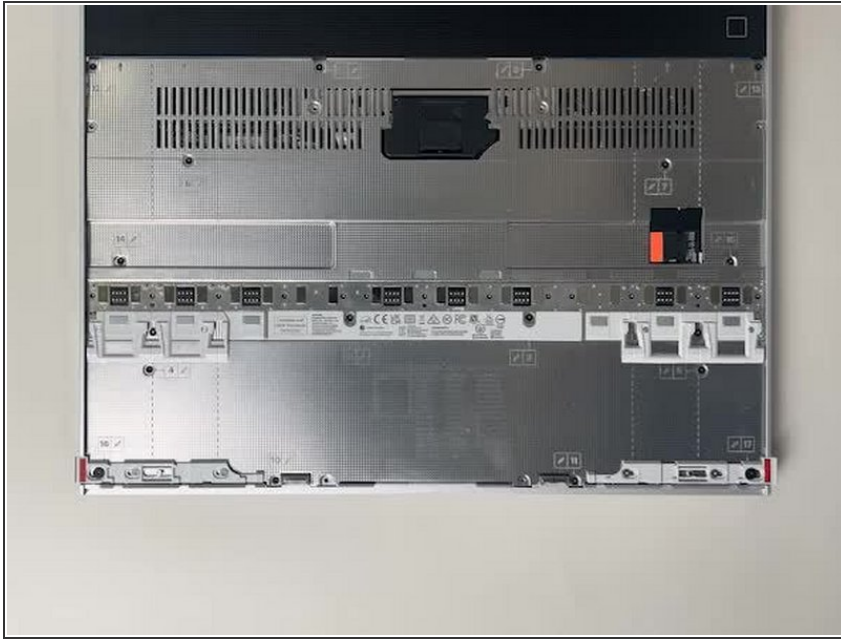
- Gently lower the Expansion Bay Shell Interposer into place noting the orientation. You should have two fasteners at the top and one at the bottom (as pictured)
- Tighten all 3 captive fasteners, making sure not to overtighten them.

Step 16 — Close Interposer Door



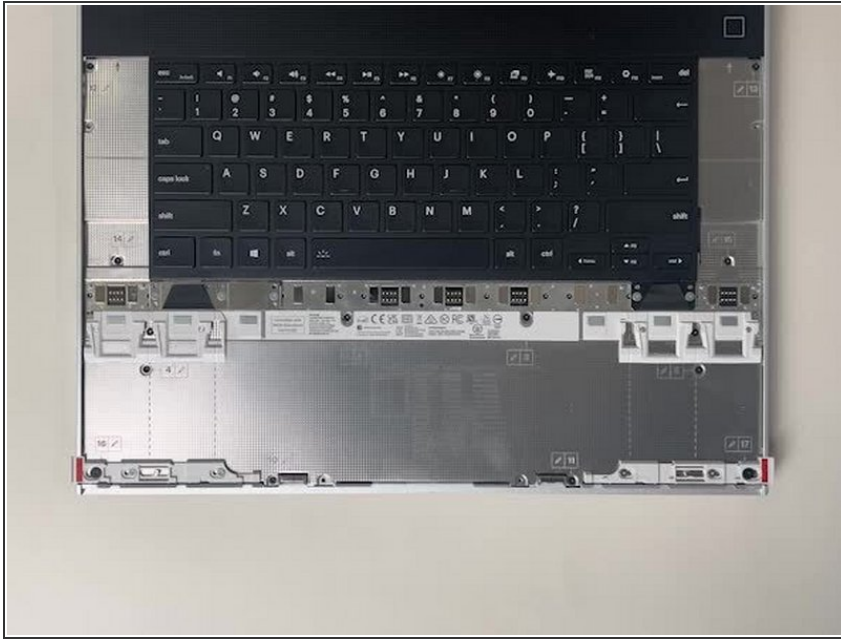
- With the Interposer installed, close the Interposer Door.

Step 17 — Install the Keyboard



- ❗ Please see our guide [here](#) on possible Input Module configurations.
- Holding from the pull tabs at the bottom of the Keyboard module, line it up with the dashed guide lines printed on the Mid Plate. Note that you can align a Keyboard so that it is either along the left edge, the right edge, or centered. With the Keyboard held at a 20 degree angle, slide it up into place.
- The notches along the top of the Keyboard will fit into the corresponding alignment guides under the Ventilation Plate.
- Lower the Keyboard gently into place, it should snap in place magnetically and sit flat.
- ❗ Ensure that the pins in the Mid Plate to the left and right of the Input Module Connector align into the corresponding holes in the Keyboard module.

Step 18 — Install Input Modules



- Next install, two Spacer Modules, an LED Matrix, a Numpad, an RGB Macropad, or whichever other combination of two Small or one Medium sized Input Module you have.
- Slide these in at an angle and lower into place, the same way the Keyboard was installed.
- ① Whichever Input modules you chose to install, you should have no empty spaces in the top row before proceeding to the next step.

Step 19 — Install Touchpad Module



- Place the Touchpad Module flat, slightly below the Keyboard as shown.
- ⓘ Like the Keyboard, you can confirm it is properly aligned by lining it up to the dashed lines on the Mid Plate.
- Applying gentle downward pressure to keep the Touchpad module flat, slide it up into place.
- ✦ Remember that the Input Deck Latches should still be open at this point, otherwise the Touchpad Module won't slide on.
- ⓘ The Touchpad Module can be installed either directly below the Keyboard or offset by one space to the right. For example, the Keyboard can have the Touchpad below it, or the Keyboard can be left-aligned while the Touchpad is centered.

Step 20 — Install Touchpad Module Spacers



- Just like installing the Touchpad module, place the Touchpad Spacers flat on the Input Deck, slightly below the Keyboard or Spacers above.
- Applying gentle pressure, slide the Touch Module Spacers into place.
- ❗ With the Touchpad Module Spacers installed there should now be no empty spaces on the Input Deck.

Step 21 — Close Input Deck Latches



- Once all Input Modules are installed, close both Input Deck Latches to secure them in place.