



Framework Laptop 16 Pre-Built Quick Start Guide

A quick start guide for the prebuilt Framework Laptop 16

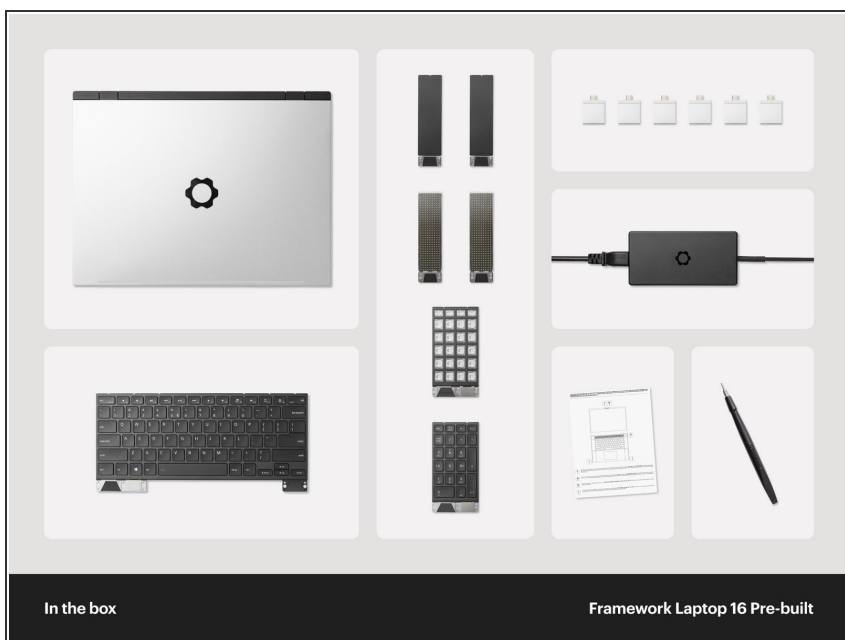
Written By: Sandy Qualey-Dobson



INTRODUCTION

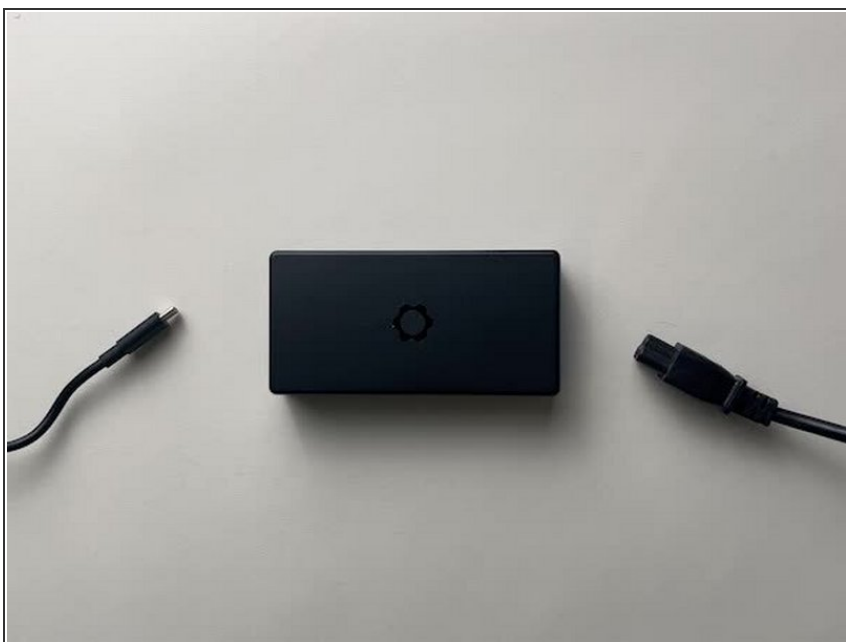
How exciting, you finally got your hands on a Framework Laptop 16! This guide will walk you through each step from unboxing to powering on your laptop so you can start using it right away. As with all our guides, make sure you read the directions in each step and view the videos before starting.

Step 1 — Unbox your Framework Laptop 16



- In the box you will find your Framework Laptop 16 with the Expansion Bay Module you chose preinstalled.
- *i* If you selected both when configuring your Laptop, the Graphics Module will come preinstalled and the Expansion Bay will be included separately.
- Depending on how your order was configured, you will also find the following:
 - Keyboard
 - Input Modules. At least 2 Spacers, 2 LED Matrix, a Numpad, or RGB Macropad (or any combination of these)
 - Power Adapter
 - Expansion Cards
 - Framework Screwdriver, Legal documentation, and pre-order stickers/patches.

Step 2 — Assemble the Power Adapter



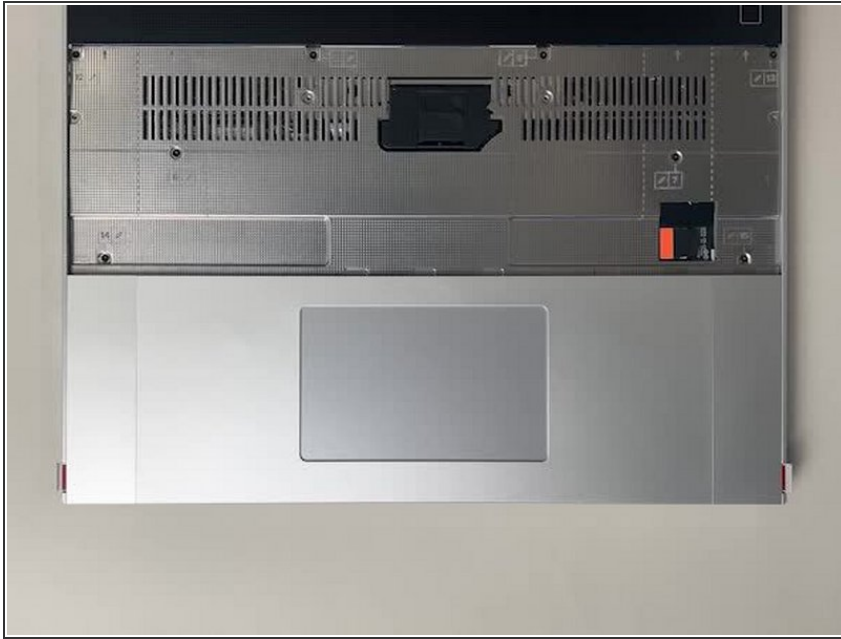
- After unboxing it, assemble the Power Adapter. Connect the AC cable and the USB-C cable to the Power Adapter body.
- ① You can plug the USB-C cable in from either end of the cable. Choose whether you want the right angle connector plugged into the adapter or into your laptop.

Step 3 — Open Input Deck Latches



- Remove the clear plastic tray covering the Input Deck and open both of the Input Deck Latches.
- ① The plastic tray is made of post-consumer-recycled PET and is highly recyclable.

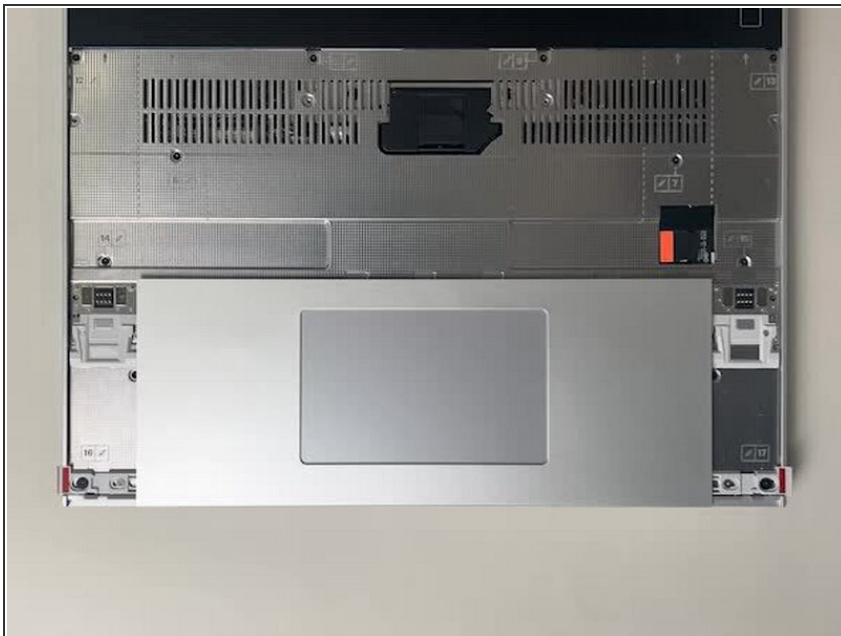
Step 4 — Remove Touchpad Spacers



- To remove the Touchpad Spacers, slide them down to release them, and then lift them out.

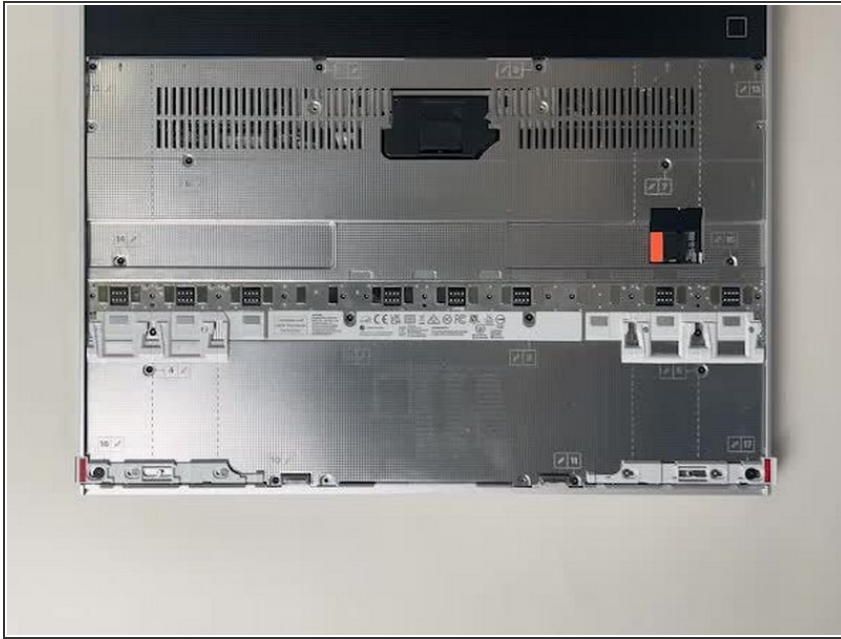
Warning: If there is resistance, make sure that the latches are open (see previous step).

Step 5 — Remove Touchpad Module



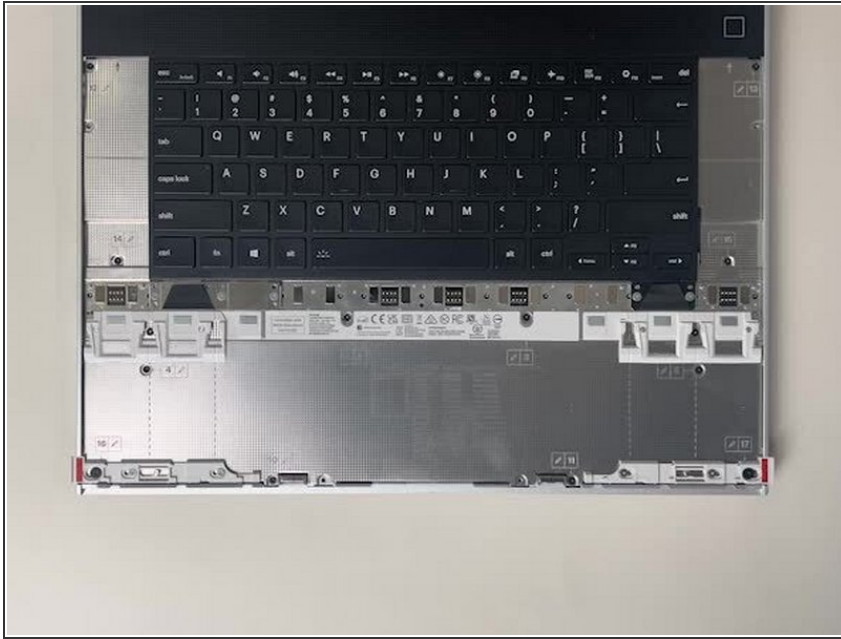
- Just like the Spacers, the Touchpad Module slides down slightly and lifts straight out.
- ☑ Note that both latches need to be unlatched for the Touchpad Module to slide out.

Step 6 — Install the Keyboard



- ❗ Please see our guide [here](#) on possible Input Module configurations.
- Holding from the pull tabs at the bottom of the Keyboard module, line it up with the dashed guide lines printed on the Mid Plate. Note that you can align a Keyboard so that it is either along the left edge, the right edge, or centered. With the Keyboard held at a 20 degree angle, slide it up into place.
- The notches along the top of the Keyboard will fit into the corresponding alignment guides under the Ventilation Plate.
- Lower the Keyboard gently into place, it should snap in place magnetically and sit flat.
- ❗ Ensure that the pins in the Mid Plate to the left and right of the Input Module Connector align into the corresponding holes in the Keyboard module.

Step 7 — Install Input Modules



- Next install, two Spacer Modules, an LED Matrix, a Numpad, an RGB Macropad, or whichever other combination of two Small or one Medium sized Input Module you have.
- Slide these in at an angle and lower into place, the same way the Keyboard was installed.
- ① Whichever Input modules you chose to install, you should have no empty spaces in the top row before proceeding to the next step.

Step 8 — Install Touchpad Module



- Place the Touchpad Module flat, slightly below the Keyboard as shown.
- ⓘ Like the Keyboard, you can confirm it is properly aligned by lining it up to the dashed lines on the Mid Plate.
- Applying gentle downward pressure to keep the Touchpad module flat, slide it up into place.
- ⚡ Remember that the Input Deck Latches should still be open at this point, otherwise the Touchpad Module won't slide on.
- ⓘ The Touchpad Module can be installed either directly below the Keyboard or offset by one space to the right. For example, the Keyboard can have the Touchpad below it, or the Keyboard can be left-aligned while the Touchpad is centered.

Step 9 — Install Touchpad Module Spacers



- Just like installing the Touchpad module, place the Touchpad Spacers flat on the Input Deck, slightly below the Keyboard or Spacers above.
- Applying gentle pressure, slide the Touch Module Spacers into place.
- ❗ With the Touchpad Module Spacers installed there should now be no empty spaces on the Input Deck.

Step 10 — Close Input Deck Latches



- Once all Input Modules are installed, close both Input Deck Latches to secure them in place.

Step 11 — Open the Expansion Card Latches



- Before inserting Expansion Cards, make sure that the Expansion Card Latches are open, these will appear red/orange when open and light grey when closed.

Step 12 — Insert the Expansion Cards



- Install the Expansion Cards as shown and once all are in place, close the Expansion Card Latches.

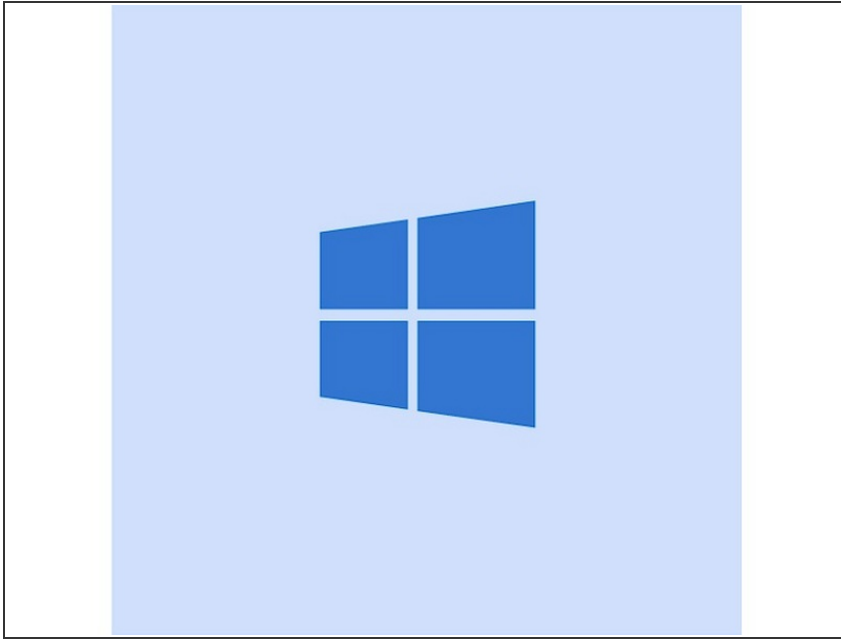
⚠ Note that some Expansion Cards only function in certain slots, so please make sure to reference [this](#) article when choosing which slots to use.

Step 13 — Turn on the Framework Laptop 16



- Before powering on, you will need to plug the power adapter into one of the USB-C Expansion Cards.
- ⓘ Note that the front two Expansion Card ports do not support power input. If in doubt check [this guide](#) to see which ports to use.
- Power on the laptop by pressing the power button, and get ready to start using your Framework Laptop!
- The first boot may take a bit longer (10-30 seconds) while the system recalibrates the installed memory.

Step 14 — Get Started with Windows 11



- Follow the on-screen instructions to set up Windows and log in.
- ① Our Pre-built Framework Laptop 16 comes with Windows 11 pre-installed. If you would prefer to install Linux, we have guides for supported Linux distributions available [here](#).
- ★ Once you are set up, make sure to run Windows Update to get the latest security and functionality updates from Microsoft.

⚠ We also recommend updating to the latest BIOS and Drivers from [here](#) for the Framework Laptop 16 to make sure the system runs optimally.