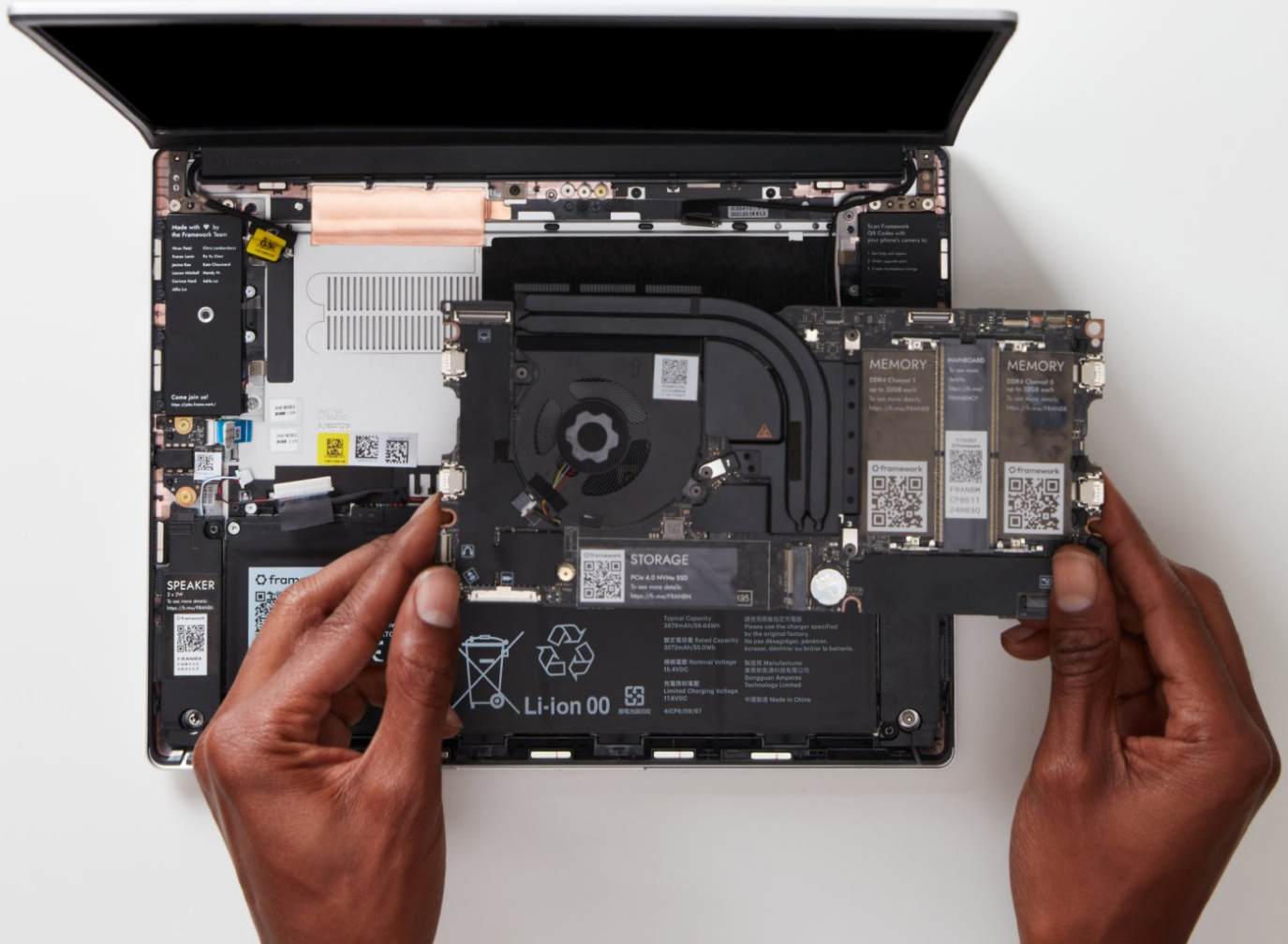




Install Memory + Storage

Written By: Sandy Qualey-Dobson

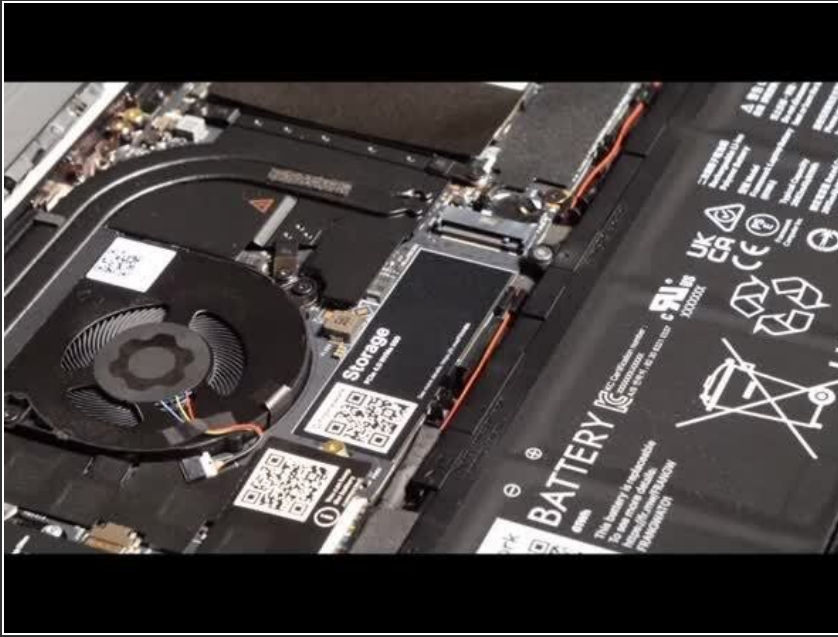


Step 1 — Insert the Memory module



- There are black mylar sheets covering the memory slots. These can be gently bent up to insert your memory modules.
- Insert the Memory module into the Mainboard by aligning the notch on the Memory module with the notch on the socket.
 - ⚠ Make sure that the memory is fully inserted before proceeding.
- Once the module is fully inserted, it will rise up at a 20-degree angle. Gently press it down towards the Mainboard until the clips located at the top and bottom of the receptacle snap into place.
- ① If you are using one Memory module, place it in the socket that is labelled "Channel 0."
- ① The first boot after installing a new Memory module will take longer than normal, as the system prepares itself for the new module.

Step 2 — Install the SSD



- Using the T5 bit in the Framework Screwdriver, unscrew the fastener that is used to secure the Storage module.
- Align the notch on the Storage module with the notch on the socket and slide the module into the Mainboard.
- Once properly inserted the module will rise up at a 20-degree angle.
- Using one finger gently hold the Storage module down to the Mainboard and use your other hand to screw in the fastener using the T5 bit in the Framework Screwdriver.

⚠ Be sure to not over-tighten the fastener.