

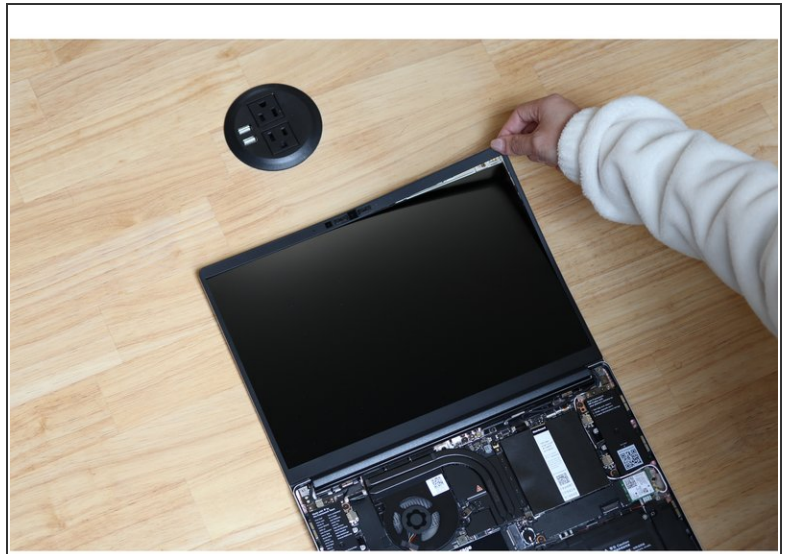


Install Bezel

Written By: Sandy Qualey-Dobson



Step 1 — Attach the Bezel



- Open the Framework Laptop 180 degrees to attach the Bezel.
- If installing a new Bezel, remove the liner pieces on the bottom of the Bezel to expose the adhesive.
- Align the corners of the Bezel to the display and place it down. The Bezel is attached by magnets and should easily click into place.
- Make sure that all of the corners and edges of the Bezel are fully connected to the Top Cover. If the corners are not aligned, carefully lift up the part of the bezel and guide it into place.