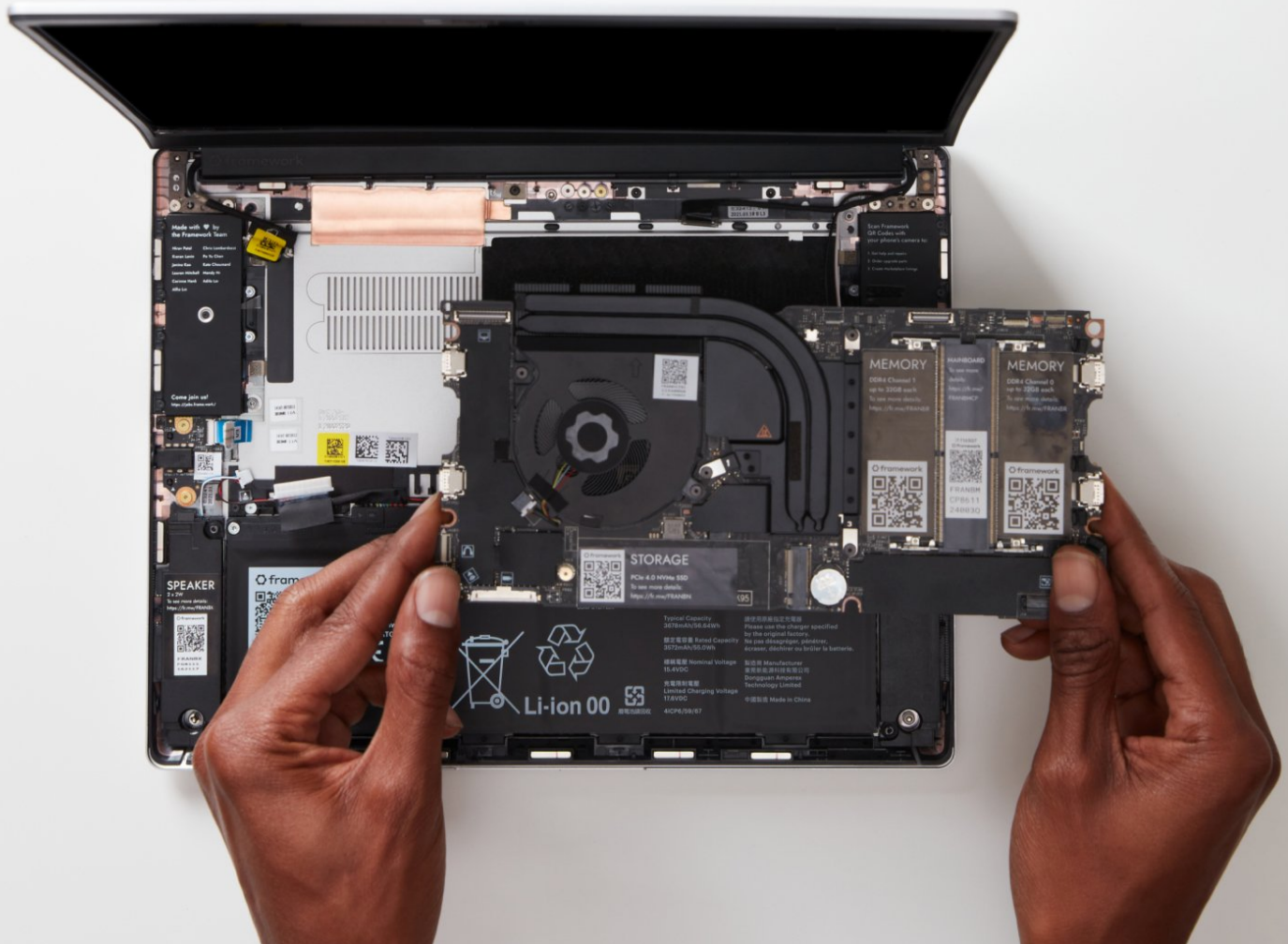


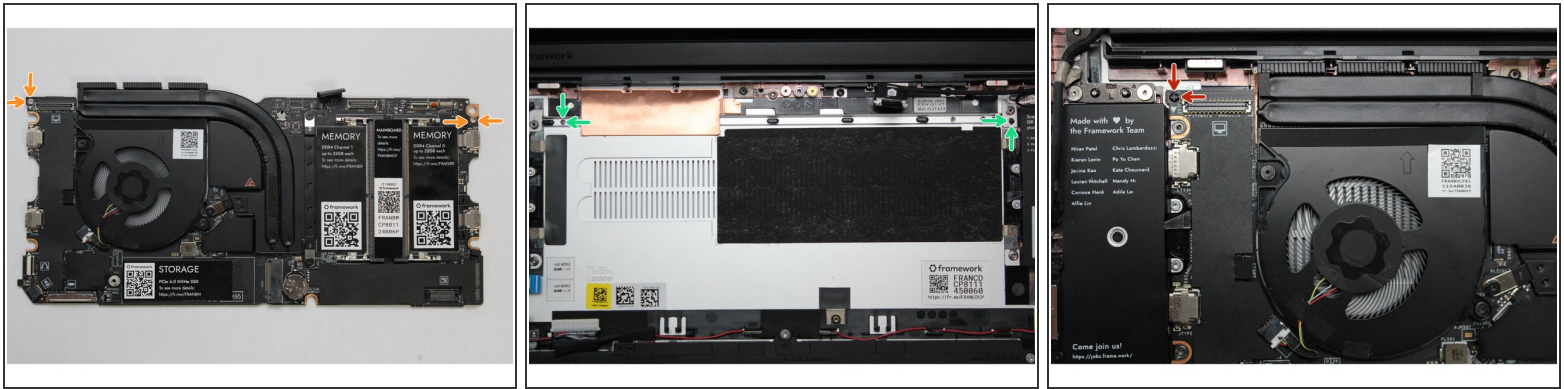


Install Mainboard and tighten fasteners

Written By: Sandy Qualey-Dobson

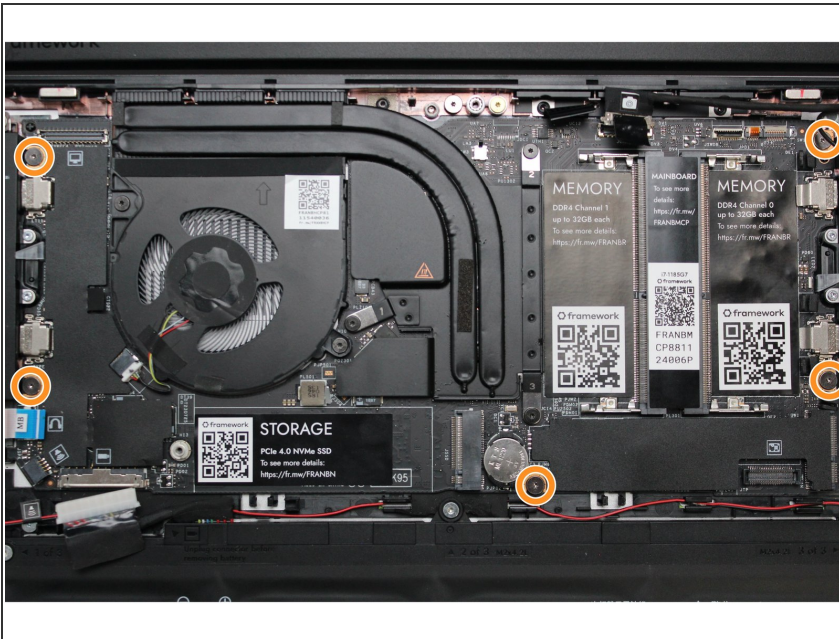


Step 1 — Install the new Mainboard into the Framework Laptop



- The easiest way to properly install the Mainboard is by aligning the two alignment pins on the Bottom Cover with the two holes on the Mainboard.
 - Take a close look at the actual Mainboard and you'll notice two small holes. You will see one hole on the top right and the other on the top left-hand side of the Mainboard as indicated in the first image with the orange arrows.
 - The alignment pins are located on the Bottom Cover as indicated with the green arrows in the second image.
 - Place the Mainboard on the Bottom Cover by using the alignment pins as a guide. Place the holes in the Mainboard directly over pins in the Bottom Cover. Both the left and right-hand side pins should fit into the holes perfectly.
- ⚠ The components located underneath the Mainboard are highly sensitive. Be sure to handle the board by the edges, and avoid touching any components on the board.**
- Once you have placed the Mainboard down be sure to make sure that the Speaker cable, Display cable, Camera cable, WiFi antenna cables, Audio Board cable, or the Battery cable are not stuck between the Mainboard and Bottom Cover as all the cables will need to be reconnected into their respective sockets after the Mainboard is secured in place.

Step 2 — Screw the Mainboard into place



- Using the T5 bit in the Framework Screwdriver, screw the five fasteners into the Mainboard once it is properly seated.

⚠ Be sure to not over-tighten the fasteners.