

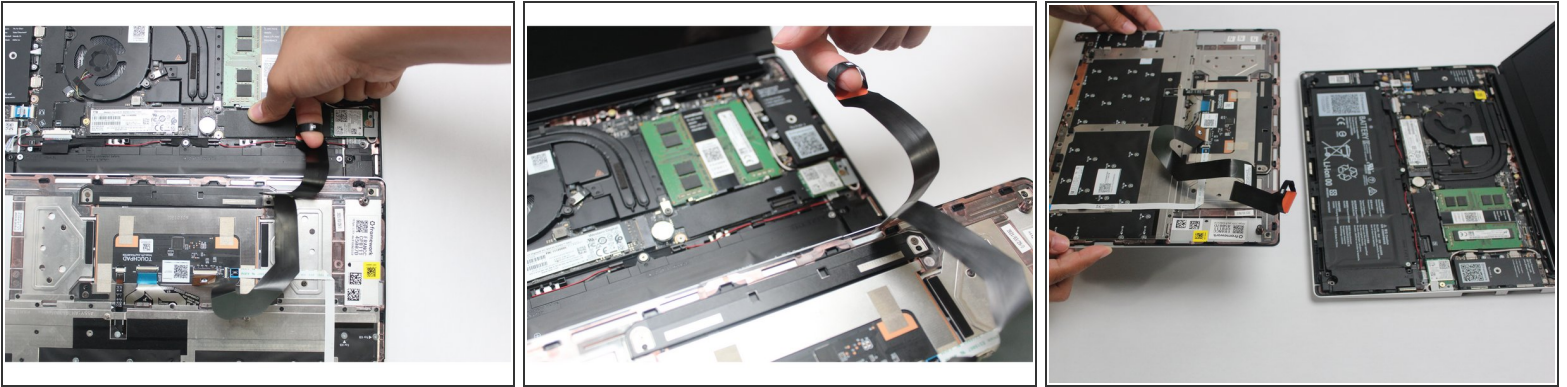


Disconnect and Remove Input Cover

Written By: Sandy Qualey-Dobson



Step 1 — Disconnect the Touchpad Cable



- Disconnect the Touchpad Cable from the Mainboard by inserting your finger into the loop and pull directly upward using a slight amount of force.
- ❗ Avoid disconnecting the Touchpad side of the cable unless you need to replace the Touchpad Cable itself, since that connector is more fragile.
- Once the Touchpad Cable is disconnected, remove the Input Cover away from the Mainboard.
- The Input Cover is now fully disconnected from the Bottom Cover and can be set aside.