



Ubuntu 20.04 LTS Installation on the Framework Laptop 13

How to install Ubuntu 20.04 LTS Linux on a Framework Laptop 13

Written By: Nirav Patel



INTRODUCTION

Once you have your Framework Laptop 13 set up following the [Quick Start Guide](#), you're ready to install your preferred OS. The Framework Laptop 13 is running some very recent hardware, make sure you're using 20.04.4 and not an earlier 20.04 release. Ubuntu 20.04.4 has full support out of the box for WiFi and the Fingerprint Reader, and doesn't require significant manual workarounds for general use.

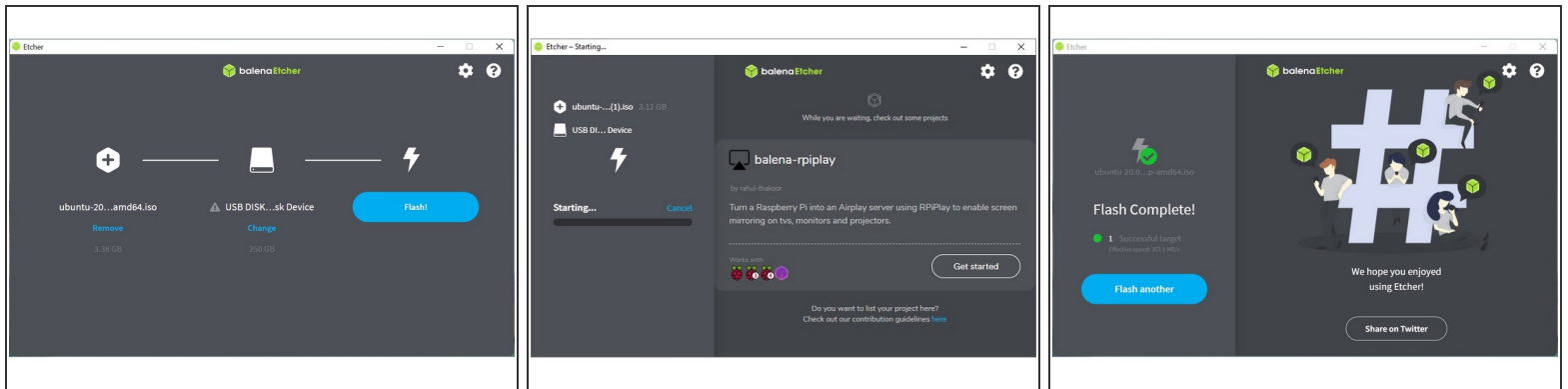
NOTE: This is an [Officially Supported Linux Distribution](#). [Learn more here](#).



PARTS:

- [Storage Expansion Card](#) (1)

Step 1 — Preparing Ubuntu Installation Media



- First, download the [Ubuntu 20.04.4 ISO](#) from Ubuntu's website. Ubuntu has a [detailed installation guide](#) that you can follow. We'll go through the steps in this Guide assuming you have a simple installation scenario of a fresh install on a blank drive.
- Download [balenaEtcher](#) as a tool to create the USB installer from the ISO. balenaEtcher is available for Windows, MacOS, and Linux. You can either install it or download the portable version that runs directly from the executable.
- Launch balenaEtcher. Insert your USB drive (8GB or larger). Click on "Flash from file" and select the ubuntu-20.04.4-desktop-amd64.iso that you downloaded. Click on "Select target" and choose your USB drive. Click "Flash" and wait a minute or two for it to complete.
- Once the USB drive creation is complete, you can close balenaEtcher and eject the USB drive from your OS.

Step 2 — Running Ubuntu



- Insert the USB drive into your powered off Framework Laptop 13, and then power on. If you have an existing OS installed on the Storage drive in your laptop, you'll need to tap F12 as you boot to bring up the Boot Manager screen. You can then select the "Linpus lite" item with your arrow keys and hit Enter.
- ❗ If you don't have an internal storage drive installed or it is blank, the laptop will boot to the USB drive directly.
- Hit Enter again to boot into Ubuntu.
- After a few seconds, you're in! If you just want to try Ubuntu out, you can click on the Try Ubuntu button and browse through the live USB version of it without touching the internal storage drive. If you do want to install Ubuntu to the internal storage drive, go on to the next step.

Step 3 — Installing Ubuntu to a drive



- Click on the Install Ubuntu button.
- Select the keyboard language you'd like to use. On the next screen, connect to your WiFi network if available. On the "Updates and other software" screen, you can keep the default selections or optionally also check the "Install third-party software" box, and click Continue.
- On the "Installation type" screen, you may have a range of options available if there is already on OS on your internal drive. For the purposes of this guide, we're assuming a clean install with the "Erase disk and install Ubuntu" option. For the other advanced options around dual booting, you can follow [Ubuntu's guide](#). Click continue.
- Select your internal drive if it isn't selected, and click Install Now. Follow the on-screen instructions to select your time zone and set up your user account. After installation completes, click Restart Now.

Step 4 — Completing Setup



- ❗ The only hardware that doesn't work out of the box is the microphone input on the 3.5mm jack. It's an easy workaround though.
 - As root, edit `/etc/modprobe.d/alsa-base.conf`, add `"options snd-hda-intel model=dell-headset-multi"` to the end of it, and then reboot.
- ❗ If you're finding that your wireless connection is dropping off:
 - `sudo gedit /etc/NetworkManager/conf.d/default-wifi-powersave-on.conf` # change 3 into 2 as to disable this feature. [connection] `wifi.powersave = 2`
 - Save the file, reboot.

⚠ After installing your OS, we recommend [updating to the latest Framework Laptop 13 firmware](#) to make sure the laptop is running at optimal performance and stability.

Enjoy using Ubuntu on your Framework Laptop 13! If you have any questions or run into any issues, we recommend bringing them to the Community in the [Ubuntu 20.04 topic](#). Members of the Framework team participate in discussions there.